

## 2021 CATALOG

TOP CLASS PRODUCTS  
PRODUCE HIGH  
LEVELED-LIVING STYLE

# HOMES<sup>®</sup>

homesbathroom.com 家家卫浴

HOMES NEW PRODUCT USER'S GUIDE

HOMES<sup>®</sup>  
Manufactured in China

2021



# HOMES<sup>®</sup>

homesbathroom.com 家家卫浴

浙江家家卫浴科技股份有限公司  
Zhejiang HOMES Bathroom Technology Co., Ltd.

地址: 浙江省玉环市经济开发区金海大道256号

Address: No.256 Jinhai road, economic development zone, Yuhuan Zhejiang, China

Tel: +86.576.80766633 | Fax: +86.576.80766689 | Mob: +86.137.7762.4949

Email: derek@homes-group.cn



# Taste — Small details

符合您品味的小细节

# HOMES®

homesbathroom.com 家家卫浴

改善生活，追求品质



## 产品目录 PRODUCT CONTENTS

001-094

古典拉手



095-110

暗扣拉手



111-114

真皮拉手



115-123

玉石贝壳



124-134

水晶拉手



135-162

纯铜拉手



163-198

陶瓷拉手



199-218

现代拉手



219-222

鸟笼/卡通/衣钩





DJK324-DA5



DJK324-BN8



DJK324-AC



DJK324-AB



DJK302-DA5



DJK302-AC



DJK302-AB



DJK302-AE



DJK302-DBAC



DJK82216-DBAC



DJK82216-BN5DL



DJK84416-BN5DL



DJK46708-AEM



DJK80514-BNMDL

Material/材料: 锌合金  
Color/颜色: ■DA5 ■AC ■AE ■AB

Model No	寸法	ΦH	ΦW	寸
DJK302	33	31	33	
DJK40708	35	27	35	
DJK80514	33	27	33	
DJK84416	35	30	35	
DJK82216	35	32	35	
DJK324	34	24	34	



DJK2260-L-DML



DJK2260-L-BK



DJK2260-L-PBN



DJK2260-L-OP



DJK2260-L-CP



DJK2260-L-DRBEP



DJK2260-L-ABH



DJK2260-L-ACH



DJK80960-DRBEP



DJK80960-BN5DL



DJK80960-DBAC



DJK80960-BK



DJK80960-CP



DJK80960-SC



DJK80960-PBH

Material/材料: 锌合金  
Color/颜色: ■CP ■OP ■ABH ■ACH

Model No	寸法	ΦH	ΦW	寸
DJK80960	32	25	32	
DJK2260	30	24	30	

Material/材料: Zinc/合金  
Color/颜色: ■ AE ■ AEB

Model No	寸	高	宽	厚
DJK9974	20	18	30	
DJK3101	29	22	29	
DJK3125	30	22	30	



DJK9974-AB



DJK3101-AEB



DJK3125-L-AEB

Material/材料: Zinc/合金  
Color/颜色: ■ AE ■ AC

Model No	寸	高	宽	厚
DJK327	37	22	35	
DJK2326	32	27	32	
DJK46332	32	22	32	



DJK327-AE



DJK2326-AC



DJK46332-AC

Material/材料: Zinc/合金  
Color/颜色: ■ AE ■ DAS

Model No	寸	高	宽	厚
DJK7776	43	15	46	
DJK80117	32	27	32	



DJK7776-AE 古铜



DJK7776-DAS 古铜



DJK80117-BK

Material/材料: Zinc/合金  
Color/颜色: ■ AE ■ CP ■ BLAE

Model No	寸	高	宽	厚
DJK7720	41	12	41	
DJK81501	43	15	46	



DJK7720-AE



DJK81501-CP



DJK81501-BLAE

Material/材料: Zinc/合金  
Color/颜色: ■ AE

Model No	寸	高	宽	厚
DJK756D-1	71	5	56	
DJK756D-2	53	5	40	
DJK2075	30	40	30	



DJK756D-1-AE



DJK756D-2-AE



DJK2075-DAS



DJK80111-BK



DJK80111-DBAC



DJK80111-BNBDL



DJK322-DBAC



DJK322-DAS



DJK322-AE



DJK80137-BK



DJK80137-BLAE



DJK80137-DABM



DJK7762-1-AE



DJK2312-A8



DJK2312-AE



DJK4006-A8



DJK86109-DBAC



DJK86109-BNMDL

Material/材料: Zinc/合金  
Color/颜色: ■ BK ■ BNBDL ■ DBAC

Model No	寸	高	宽	厚
DJK80111	32	26	32	

Material/材料: Zinc/合金  
Color/颜色: ■ AE ■ DAS ■ DBAC

Model No	寸	高	宽	厚
DJK322	30	25	30	

Material/材料: Zinc/合金  
Color/颜色: ■ AC ■ BK ■ DABM

Model No	寸	高	宽	厚
DJK80137	32	22	32	

Material/材料: Zinc/合金  
Color/颜色: ■ AE ■ A8

Model No	寸	高	宽	厚
DJK312	29	23	29	
DJK776D-1	37		22	

Material/材料: Zinc/合金  
Color/颜色: ■ AE ■ DBAC ■ BNMDL

Model No	寸	高	宽	厚
DJK6109	32	22	32	
DJK4006	35	28	35	



DJK80290-160-BK



DJK80290-128-BK



DJK80111-BK



DJK80290-96-BK

Material/材质: Zinc/锌合金  
Color/颜色: ■BK ■BNBDL

Model No	长 L	宽 W	高 H	孔距 D
DJK80290	96	106	33	13
	128	138	33	13
	160	170	33	13
DJK80111	32	26	32	



DJK80290-96-BNBDL



DJK80111-BNBDL



DJK80290-128-BNBDL



DJK80290-160-BNBDL



DJK80290-160-BNMDL



DJK80109-BNMDL



DJK80290-128-BNMDL



DJK80290-96-BNMDL

Material/材质: Zinc/锌合金  
Color/颜色: ■BK ■BNMDL

Model No	长 L	宽 W	高 H	孔距 D
DJK80290	96	106	32	20
	128	136	32	20
	160	170	32	20



DJK81091-BK



DJK81092-96-BK



DJK81092-128-BK



DJK81092-160-BK



DJK81092-160-BNBDL



DJK81092-128-BNBDL



DJK81091-BNBDL



DJK81092-96-BNBDL

Material/材质: 2008Zn  
Color/颜色:  CF  BNBDL  DB

Model No	寸	寸	寸	寸
DJK81091		31	25	31
DJK81092	96	128	25	16
	128	141	25	16
	160	173	25	16



DJK81092-96-DB



DJK81091-DB



DJK81092-128-DB



DJK81092-160-DB



DJK81092-160-DBAC



DJK81092-128-DBAC



DJK81091-DBAC



DJK81092-96-DBAC



DJK81091-DNACH



DJK81092-96-DNACH



DJK81092-128-DNACH



DJK81092-160-DNACH



DJK83417-160-DBAC



DJK83415-S-DBAC



DJK83417-128-DBAC



DJK83415-L-DBAC



DJK83417-96-DBAC



DJK83414-96-DBAC



DJK83417-160-ABH



DJK83415-L-ABH



DJK83417-128-ABH



DJK83417-96-ABH



DJK83414-96-ABH



DJK83414-96-BNBOL



DJK83417-96-BNBOL

Material/材质: Zinc/锌  
Color/颜色: ■ DBAC ■ BNBOL

Model No	尺寸	重量	长度	宽度
DJK83414	96	117	32	18
DJK83415-L	35.5	33	23	
DJK83417	96	110	27	17
	128	142	32	18
	160	178	36	19
DJK83417-12	300	315	40	23



DJK83417-128-BNBOL



DJK83417-160-BNBOL



DJK83415-L-BNBOL



DJK83417-12"-BNBOL





DJK84317-160-DBAC



DJK86108-DBAC



DJK84317-128-DBAC



DJK80117-DBAC



DJK84317-96-DBAC



DJK82521-DBAC



DJK84317-96-DABH

Material/材质: Zinc/锌  
Color/颜色: ■ DABH ■ DBAC

Model No	尺寸	长度	高度	厚度
DJK84317	96	111	35	13
DJK84317	128	145	35	13
DJK84317	160	175	35	13
DJK82521		30	29	30
DJK80117		32	27	32
DJK86108		32	26	32



DJK84317-128-DABH



DJK82521-DABH



DJK84317-160-DABH



DJK80117-DABH



DJK80915-SIM



DJK81527-128-SIM

Material/材质: Zinc/锌  
Color/颜色: ■ SIM ■ DBECL

Model No	尺寸	长度	高度	厚度
DJK81127		30	26	20
DJK81527	96	115	29	21
	128	145	29	21
DJK80915		31	25.5	21
DJK80910	L	30	22	30
DJK80911	96	106	26	17
	128	136	26	17
	160	170	26	17



DJK81127-SIM



DJK81527-96-SIM



DJK80911-96-BNBDL



DJK80910-L-BNBDL



DJK80911-128-BNBDL



DJK80911-160-BNBDL



DJK84602-128-BK

DJK84602-96-BK

Material/Material: 鋅合金  
Color/顏色: ■SIM ■BK

Model No	尺寸	mm	mm	mm
DJK82602	S	31.5	29.5	31.5
DJK82602	L	38	32	38
DJK84602	96	114	32	19
	128	146	32	19



DJK82602-L-BK



DJK82602-S-BK



DJK84602-96-SIM



DJK82602-S-SIM



DJK84602-128-SIM



DJK82602-L-SIM



DJK81537-160-DABM



DJK81537-128-DABM



DJK80137-DABM



DJK81537-96-DABM



DJK80137-BLAE



DJK81537-96-BLAE

Material/Material: 鋅合金  
Color/顏色: ■BLAE ■DABM

Model No	尺寸	mm	mm	mm
DJK80137		30	25	30
DJK81537	96	106	30	15
	128	138	30	15
	160	170	30	15
	305	315	30	15



DJK81537-128-BLAE



DJK81537-160-BLAE



DJK81537-12-BLAE



DJK84317-163-BK



DJK84317-128-BK



DJK84317-96-BK



DJK80117-BK



DJK80111-BK



DJK80137-BK



DJK80980-BK

Material/材料: Zinc/鋅  
Color/顏色: ■ BK

Model No	長	寬	厚	高
DJK80111	32	26	32	
DJK80117	32	27	32	
DJK80980	32	26	32	
DJK26637	34	28	34	
DJK26637	96	114	19	34
	128	147	20	35



DJK26657-128-BK



DJK26637-96-BK



DJK26637-BK



DJK85007-96-BLAE



DJK85007-76-BLAE



DJK80980-BLAE



DJK85004-76-BLAE



DJK87000-BLAE



DJK85004-96-BLAE

Material/材料: Zinc/鋅  
Color/顏色: ■ BLAE ■ DBAC

Model No	長	寬	厚	高
DJK80980		31.5	25.5	31.5
DJK85007	76	115	30	20
	96	135	34	21
DJK87000		29.5	24.5	29.5
DJK85004	76	100	22	25
	96	122	23	25
DJK88118		31.5	22	31.5
DJK80119		30	22	30
DJK88518	76	137	24	20
DJK80324	96	152	25	18
DJK80323		30	25	30



DJK88518-76-BLAE



DJK88118-BLAE



DJK80324-96-BLAE



DJK80323-BLAE



DJK80119-BLAE



DJK82619-BNMDL



DJK82176-BNMDL



DJK82412-76-BNMDL

Material/材质: Zinc alloy  
Color/颜色: ■BNMDL ■BNMDL

Model No	尺寸	mm	mm	mm	mm
DJK81224	44	35	44		
DJK86303	34	26.5	34		
DJK86373	95	115	31	75	
	128	148	31	75	
	160	180	31	75	
DJK82176	30	28	30		
DJK82177	75	128	25	17	
DJK82412	75	152	25	27	
DJK82619	35	34	38		



DJK82177-76-BNMDL



DJK86303-BNMDL



DJK86373-95-BNMDL



DJK81224-BNMDL



DJK86373-128-BNMDL



DJK86373-160-BNMDL



DJK86399-BNMDL



DJK86390-76-BNMDL

Material/材质: Zinc alloy  
Color/颜色: ■BNMDL ■BLAE

Model No	尺寸	mm	mm	mm	mm
DJK86399	32	26	32		
DJK86390	75	142	23	18	
DJK86318		85.5	31	17	
DJK80718	128	140	36	17	
DJK82300	95	48	20	30	
DJK81293	160	180	25	19	
DJK80680	31.5	25.5	31.5		



DJK82300-BNMDL



DJK81293-160-BNMDL



DJK80980-BNMDL



DJK80137-BLAE



DJK80618-S-BLAE



DJK80718-128-BLAE



DJK86109-BNMDL



DJK80618-S-BNMDL



DJK80718-128-BNMDL



DJK80125-96-DBAC



DJK80025-DBAC



DJK80123-96-8NB0L



DJK82123-8NB0L



DJK81094-96-DABH

Material/材质: Zinc/锌  
Color/颜色: ■ DBAC ■ DBH

Model No	长 L	宽 W	厚 H	孔距 D
DJK81093		31	25	31
DJK81094	96	198	27	15
	126	140	27	15
	160	170	27	15
DJK80125	96	121	26.5	15
DJK80025		30	26.5	30
DJK80123	96	121	26.5	15
DJK82123		30	26.5	30



DJK81094-126-DABH



DJK81094-160-DABH



DJK81093-DABH



DJK26628-128-BK ■■■



DJK26628-96-BK ■■■



DJK26629-S-SIM ■■■■■



DJK26629-S-BK ■■■

Material/材质: Zinc/锌  
Color/颜色: ■ BK ■ SIM

Model No	长 L	宽 W	厚 H	孔距 D
DJK26629		37.5	31	37.5
DJK26628	96	130	31	15
	128	163	31.5	15



DJK26628-128-SIM ■■■■■



DJK26628-96-SIM ■■■■■



DJK81936-96-BNBDL



DJK81926-BNBDL

Material/材料: Zinc/合金  
Color/颜色: ■ DBAC ■ BNBDL

Model No	寸吋	mm	mm	mm
DJK81936	96	32.5	30	32.5
DJK81936	96	135	21	18
DJK81936	126	150	30	20
DJK80975	33	25	33	



DJK81936-126-DMACH



DJK80975-DMACH



DJK81926-DMACH



DJK82435-126-DASH



DJK82435-5-DASH



DJK82671-126-PBN



DJK2260-L-PBN

Material/材料: Zinc/合金  
Color/颜色: □ CP □ AE ■ DASH

Model No	寸吋	mm	mm	mm
DJK82435-5	36	30	32	22.5
DJK82435	126	150	28	32
DJK2260	30	24	30	
DJK82671	96	111	25	20
	126	140	25	21
	150	174	25	23



DJK82671-96-PBN

Material/材料: Zinc/合金  
Color/颜色: ■ SM ■ DBAC

Model No	寸吋	mm	mm	mm
DJK81007	40	26.5	25	
DJK81008	96	115	27	16



DJK81097-DBAC



DJK81098-96-DBAC



DJK81097-SM



DJK81098-96-SM



DJK80975-SIM



DJK80977-96-SIM



DJK80976-SIM



DJK80976-ABH



DJK80977-96-ABH

Material/材料: Zinc/合金  
Color/颜色: ■ ABH ■ SM

Model No	寸吋	mm	mm	mm
DJK80975	33	26	33	
DJK80976	48	18		
DJK80977	96	106	30	14



DJK80975-ABH



DJK83112-96-ABH



DJK83112-ABH



DJK83112-8NBDL



DJK89318-8NBDL



DJK89318-ABH

Material/材料: Zinc/锌  
Color/颜色: ABH ■ 8NBDL

Model No.	长	宽	厚	孔距
DJK83112	96	110	26	19
DJK83112	44	30	26	
DJK89318	35	31	35	
DJK84230	96	147	21	15
DJK83230	100	22	21	
DJK82278	96	110	25	26
DJK81378	41	25	33	



DJK83112-96-8NBDL



DJK84230-96-DBAC



DJK83230-DBAC



DJK81378-DBAC



DJK82178-96-DBAC



DJK81155-DBAC



DJK81155-8NBDL



DJK81154-96-DBAC



DJK81154-96-8NBDL

Material/材料: Zinc/锌  
Color/颜色: DBAC ■ 8NBDL

Model No.	长	宽	厚	孔距
DJK81155	26	25	28	
DJK81154	96	110	26	15
DJK80959	34.5	29.5	27	
DJK81959	96	147	21	15
DJK81959	128	170	27	20



DJK81959-96-DBAC



DJK81959-128-DBAC



DJK80959-DBAC



DJK81959-96-DBH



DJK81959-128-DBH



DJK80959-DBH



DJK6075-128-WG 吋



DJK6075-5-WG 吋



DJK6075-96-WG 吋

Material/材: Zinc Chrome/鍍鋅  
Color/顏色: DOP ■ AE DOPCLAS

Model No.	吋	吋	吋	吋
DJK6075	5	32	24	30
	96	108	29	18
	128	145	29	18



DJK6075-128-BG 吋



DJK6075-96-BG 吋



DJK6075-5-BG 吋



DJK6075-96-AE 吋



DJK6075-128-AE 吋



DJK6075-5-AE 吋



DJK52010-160-PBN



DJK83366-PBN



DJK52010-128-PBN



DJK83366-DNBEP 吋



DJK52010-128-DNBEP 吋



DJK52010-160-DNBEP 吋



Material/材: Zinc/鍍鋅  
Color/顏色: ■ DNBEP ■ PBN

Model No.	吋	吋	吋	吋
DJK3366		36	74	13
DJK52010	128	158	28	13
	160	206	28	13





DJK80776-128-DMBP 铜色



DJK80776-96-DMBP 铜色



DJK80005-128-DMBP 铜色



DJK80005-96-DMBP 铜色



DJK80008-96-DBAC 古铜



DJK80008-128-DBAC 古铜



DJK32531-96-DBAC



DJK80965-DMBP 铜色



DJK80960-DBAC 古铜

Material/材质: Zinc/锌  
Color/颜色: ■DMBP ■DBAC

Model No	长 L	高 H	宽 W	厚 T
DJK32531	96	140	26	19
DJK31021		35	31.7	35
DJK80960		32	26	32
DJK80008	96	135	21	18
	128	167	21	18
DJK80776	96	111	29	13
	128	143	31	14



DJK81531-DBAC



DJK82523-DBM



DJK81651-96-DBM



DJK82521-DBAC



DJK81652-96-DBAC

Material/材质: Zinc/锌  
Color/颜色: ■DMBP ■DBAC

Model No	长 L	高 H	宽 W	厚 T
DJK81651	96	112	26	19
DJK82523		25	24	25
DJK82521		30	23	30
DJK81652	96	113	26	19
DJK80452	96	130	26	15
DJK322		30	25	30
DJK3167	76	118	26	22
DJK80111		32	26	32



DJK80452-96-8NMOL



DJK80452-96-DBM



DJK80111-DBAC



DJK322-DBAC



DJK3167-76-DBAC



DJK83215-128-BNMOL



DJK82910-BNMOL

Material/材料: Zinc/锌  
Color/颜色: ■ BNMOL

Model No	长	宽	厚	重
DJK83215	128	52	31	25
DJK82117		31	26	31
DJK82118	96	121	21	11
DJK82910		30	28	30
DJK81975	128	148	35	17
	160	180	35	17
DJK81975	S	32	32	32
	L	30	32	34



DJK82118-96-BNMOL



DJK82117-BNMOL



DJK81795-S-BNMOL



DJK81795-160-BNMOL



DJK81795-L-BNMOL



DJK81795-128-BNMOL



DJK52103-96-BMBOL



DJK52910-BMBOL



DJK52103-96-BSNBEP



DJK51666-96-BSNBEP



DJK52910-BSNBEP



DJK9000-16-OP



DJK9000-16-BK

Material/材料: Zinc/锌  
Color/颜色: ■ BMBOL ■ BSNBEP

Model No	长	宽	厚	重
DJK52910		30	28	30
DJK52103	96	137	21	14
DJK51666	96	114	20	67
DJK9000	96	30	25	50



DJK51666-96-BMBOL

Material/材料: Zinc/合金

Color/颜色: ■ ON ■ PBN ■ RG

Model No.	长 L	宽 W	厚 H	孔距 S
DJK1651	128	171	29	21
	96	130	26	17
DJK6801		31	25	30



DJK1651-96-ON



DJK1651-128-ON



DJK6801-30-ON



DJK1651-96-PBN



DJK6801-30-PBN



DJK1651-128-PBN



DJK6801-30-RG 亮玫瑰金



DJK1651-128-RG 亮玫瑰金



DJK1651-96-RG 亮玫瑰金

Material/材料: Zinc/合金

Color/颜色: ■ AEB ■ GP

Model No.	长 L	宽 W	厚 H	孔距 S
DJK1651	128	130	26	17
DJK6801		30	25	30
DJK2641	96	128	21	23
DJK2641	128	160	22	26



DJK2641-GP-W-128 真金



DJK2641-GP-W-96 真金



DJK6801-30-GP 真金



DJK1651-128-AEB 玫瑰金



DJK1651-128-GP 真金



DJK6801-30-AEB 玫瑰金



DJF2381-AB



DJF2381-AB-128



DJF2381-AE



DJF2381-AE-128



DJF2381-AC



DJF2381-AC-128

Material/材质: Zinc/锌  
Color/颜色: ■ AE ■ AC ■ CP ■ AB

Model No	尺寸	Height	Length	Width
DJF2381	70	30	33	
DJF2381-128	147	30	25.5	
DJK9109	32	27	32	



DJF2381-DAS



DJF2381-DAS-128



DJK96109-DBAC



DJF2381-DBAC



DJF2381-DBAC-128



DJK1109-AB



DJK5315-160-AB



DJK1109-BSN



DJK5315-160-BSN



DJK1109-AEB



DJK5315-160-AEB

Material/材质: Zinc/锌  
Color/颜色: ■ CP ■ AB ■ BSN

Model No	尺寸	Height	Length	Width
DJK1109		34.5	30	34.5
DJK5315	160	17.5	31	30



DJK1109-CP



DJK5315-160-CP



DJK1109-SC



DJK5315-160-SC



DJK81019-35-0RB

DJK81019-126-0RB

DJK81019-192-0RB

Material/Material: Zinc/锌  
Color/颜色: ■ 0RB ■ 0BSN

Model No	尺寸	mm	mm	mm	mm
DJK81019	35	29	35		
	96	114	30	17	
	126	148	31	18	
	160	180	32	19	
	192	213	33.7	20	



DJK81007-160-0BSN www



DJK81007-35-0BSN www



DJK81007-192-0BSN www

Material/Material: Zinc/锌  
Color/颜色: ■ 0BSN ■ 0DASH

Model No	尺寸	mm	mm	mm	mm
DJK81007	35	29	35		
	126	140	32	13.5	
	160	173	34.4	14	
	192	204	34.4	14.4	



DJK81007-126-0BSN www



DJK81020-160-HBSN www



DJK81020-35-HBSN www



DJK81020-126-HBSN www



DJK81020-96-HBSN www

Material/Material: Zinc/锌  
Color/颜色: ■ 0BSN ■ 0DASH

Model No	尺寸	mm	mm	mm	mm
DJK81020	35	29	35		
	96	110	29	13.5	
	126	142	29.3	14	
	160	174	29.5	14.5	



DJK81020-160-DASH www



DJK81020-126-DASH www



DJK81020-96-DASH www



DJK81020-35-DASH www



DJK1656-160-BNMDL



DJK1658-126-BNMDL



DJK1658-96-BNMDL

Material/材质: Zinc alloy  
Color/颜色: ■ PBN ■ BNMDL

Model No	尺寸	总长	总宽	总高
DJK1658	96	131	29	15
	126	165	30	16
	160	197	31	17
DJK2260	64	80	26	51
	30	24	30	



DJK1658-96-PBN



DJK63331-64-PBN



DJK1658-126-PBN



DJK2260-L-PBN



DJK1658-160-PBN



DJK81001-126-ORB



DJK81001-ORB

DJK81001-192-ORB



DJK81001-192-HBSN



DJK81001-126-HBSN



DJK81001-HBSN

Material/材质: Zinc alloy  
Color/颜色: ■ HBSN ■ ORB

Model No	尺寸	总长	总宽	总高
DJK81001		35	29	35
	126	142	21.4	14
	192	208	23.8	15



DJK81008-160-HBSN 哑光黑



DJK81008-128-HBSN 哑光黑



DJK81008-35-HBSN 哑光黑



DJK81008-96-HBSN 哑光黑



DJK81008-96-D8SN 哑光金



DJK81008-128-D8SN 哑光金



DJK81008-160-D8SN 哑光金

Material/材质: 锌合金  
Color/颜色: ■ D8SN 哑光金 ■ HBSN 哑光黑

Model No	长	宽	高	厚
DJK81008	35	28	35	
	96	106	26.5	14.9
	128	140	26.5	16
	160	172	27.3	17



DJK81008-35-D8SN 哑光金



DJK81016-160-CP



DJK81016-128-CP



DJK81016-35-CP



DJK81016-96-CP



DJK81016-96-D8SN 哑光金



DJK81016-128-D8SN 哑光金



DJK81016-160-D8SN 哑光金

Material/材质: 锌合金  
Color/颜色: ■ CP 亮银 ■ D8SN 哑光金

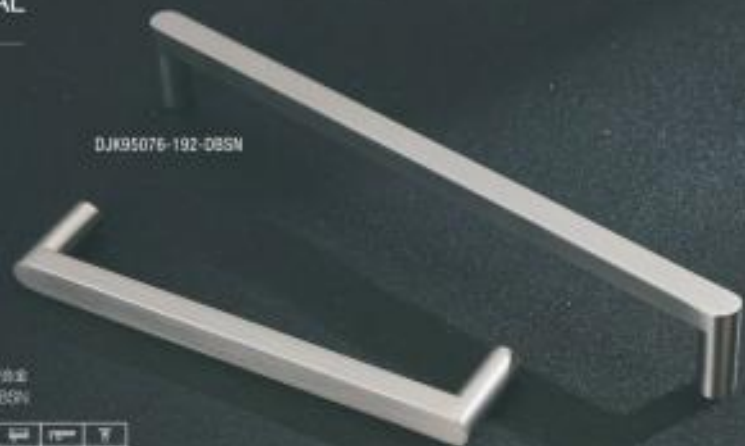
Model No	长	宽	高	厚
DJK81016	25	28	35	
	96	106	26.5	14.9
	128	142	26.2	14.9
	160	173	26.2	15.5



DJK81016-35-D8SN 哑光金

CLASSICAL  
古典拉手系列

DJK95076-192-DBSN



Material/材质: Zinc alloy  
Color/颜色: DBSN

Model No	L	W	H	T
DJK95076	128	137	29	9
	192	201	29	9
	256	265	29	9

DJK95076-128-DBSN



DJK87226-224-BK



DJK87226-192-BK



DJK87226-128-BK

Material/材质: Zinc alloy  
Color/颜色: BK ORB DBSN

Model No	L	W	H	T
DJK87226	128	138	35	10
	192	202	35	10
	224	234	35	10

HOMES



DJK95076-256-ORB



DJK95076-192-ORB



DJK9605-ORB



DJK95076-128-ORB



DJK9323-128-BC \*\*\*



DJK9323-160-BC \*\*\*

Material/材质: Zinc alloy  
Color/颜色: BK ORB

Model No	L	W	H	T
DJK9605		38	29	26
DJK9323	128	143	32	15
	160	175	32	15
	224	239	32	15



DJK9323-224-BC \*\*\*



CLASSICAL  
古典把手系列



Material/材质: Zinc alloy  
Color/颜色: ■ CB ■ GP ■ BK

Model No.	尺寸	长度	高度	厚度
DJK2475	128	138	20	30
	160	170	20	30
	320	330	20	30



DJK2475-320-CB



DJK2475-160-GP

DJK2475-128-GP



DJK2475-160-CB

DJK2475-128-CB



DJK2475-160-BK

DJK2475-128-BK



DJK2061-160-SIM



DJKS2026-128-BK



DJK2061-160-BK



DJKS2026-160-CBAC

Material/材质: Zinc alloy  
Color/颜色: ■ BK ■ GM

Model No.	尺寸	长度	高度	厚度
DJK2061	160	172	31	12
DJKS2026	128	142	25	14
	160	173	25	14
	192	204	25	14



DJKS2020-192-BSN



Material/材质: 304#316  
Color/颜色: ■ BK ■ GP

Model No.	尺寸	mm	mm	mm	mm
DJK9004	190	138	40	14	
	320	328	40	14	



DJK9004-320-BK 黑色



DJK9004-320-GP 金色



DJK9004-160-BK 黑色



DJK9004-160-GP 金色

Material/材质: 304#316  
Color/颜色: ■ BK ■ GP

Model No.	尺寸	mm	mm	mm
DJK25031		30	24	30
DJK25100	96	138	35	12
	128	140	35	12
	320	320	35	12



DJK25031-30-GP 金色



DJK25031-30-BK 黑色



DJK25100-128-BK 黑色



DJK25100-96-BK 黑色



DJK25100-128-GP 金色



DJK25100-96-GP 金色

CLASSICAL  
古典拉手系列



HOMES



Material:  Gold  Silver  Black

Color:  Gold  Silver  Black

Model No.	L	W	H	W	H
DJK9002-320	320	20	10	20	10
DJK9002-160	160	20	10	20	10
DJK9002-64	64	20	10	20	10



DJK9002-320-BK



DJK9002-320-BSN



DJK9002-320-OP



DJK9002-160-BK



DJK9002-160-OP



DJK9002-160-BSN



DJK9002-64-BK



DJK9002-64-OP



DJK9002-64-BSN

CLASSICAL  
古典拉手系列



DJK9624-192-DBSN

DJK9624-128-DBSN

DJK9624-96-DBSN



Material/材料: Zinc/合金  
Color/颜色: ■ BK ■ GP ■ DBSN

Model No	长	宽	厚	重
DJK9624	96	122	28	20
	128	156	29	21
	192	220	31	21



DJK9622-96-GP



DJK9622-128-GP



DJK9660-GP



DJK9622-192-GP

Material/材料: Zinc/合金  
Color/颜色: ■ GP ■ DBSN

Model No	长	宽	厚	重
DJK9660		39.5	27.5	39.5
DJK9622	96	118	27	18
	128	150	31	18
	192	214	31	18



DJK9622-96-DBSN



DJK9622-128-DBSN



DJK9660-DBSN



DJK9622-192-DBSN

CLASSICAL  
古典拉手系列



DJK6122-128-BK



DJK6122-96-BK



DJK2260-L-BK



DJK81925-160-BK



DJK81925-128-BK



DJK81925-96-BK

Material/MH: Zinc/白金  
Color/颜色: □CP ■PBI ■BK

Model No	尺寸	高度	长度	厚
DJK6122	96	100	25	12
	128	138	25	16

HOMES



DJK81925-160-CP



DJK2260-L-CP



DJK81925-128-CP



DJK81925-96-CP

Material/MH: Zinc/Gesamtoberfl.  
Color/颜色: ■CP ■DNBEP

Model No	尺寸	高度	长度	厚
DJK2050		30	24	30
DJK82290		20	24	27
DJK81925	96	100	25	12
DJK81925	128	138	25	16
DJK81925	160	174	25	16



DJK2260-L-DNBEP



DJK81925-96-DNBEP



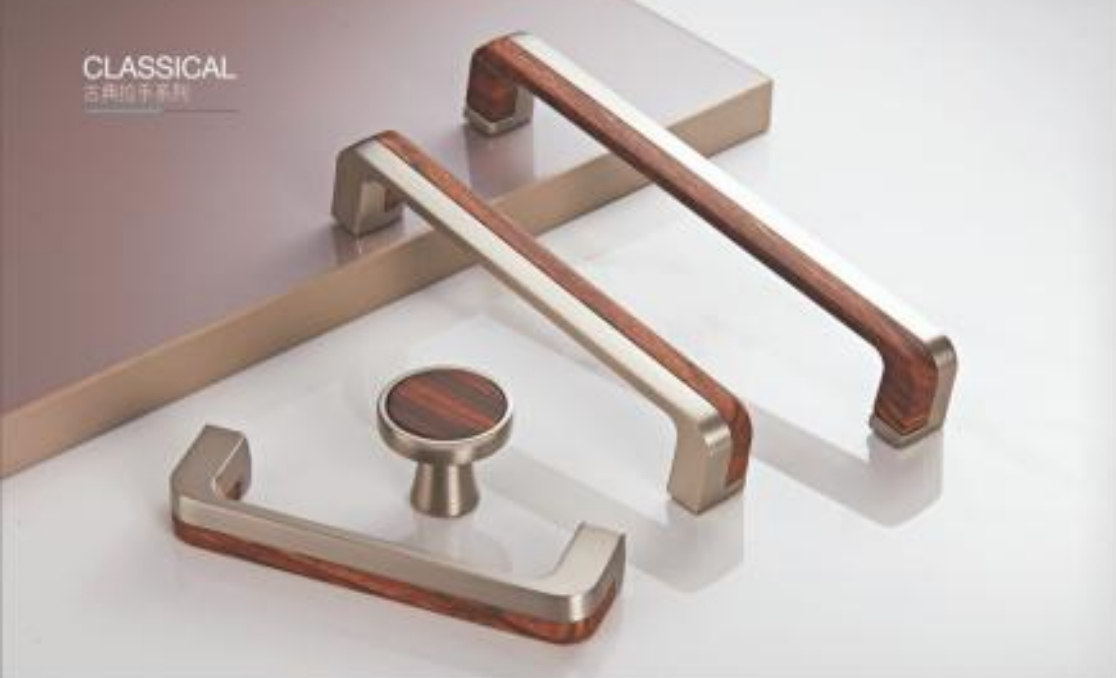
DJK82356-DNBEP



DJK81925-128-DNBEP



DJK81925-160-DNBEP



DJK81015-160-DBSN 新古典主义



DJK81015-128-DBSN 新古典主义



DJK81015-35-DBSN



DJK81015-96-DBSN 新古典主义

Material/材质: 锌合金  
Color/颜色: ■ CP ■ DBSN

Model No	长 L	高 H	宽 W	厚 T
DJK81015	96	35	29	35
	96	100	26	14.5
	128	138	27	15
	160	171	28	15.5

Material/材质: 锌合金  
Color/颜色: ■ CP ■ DBSN

Model No	长 L	高 H	宽 W	厚 T
DJK81010	96	26	35	
	92	106	26	14.5
	128	141	27	15
	160	200	29	15.5



DJK81010-96-DBSN 新古典主义



DJK81010-128-DBSN 新古典主义



DJK81010-160-DBSN 新古典主义



DJK81010-35-DBSN



DJK81010-35-CP 新古典主义



DJK81010-160-CP 新古典主义



DJK81010-128-CP 新古典主义



DJK6576-192-DBAC (DBAC)



DJK6576-128-DBAC (DBAC)



DJK6576-96-DBAC (DBAC)

Material/材料: Zinc Coating/镀锌  
Color/颜色: ■ DBAC ■ BK

Model No	尺寸	长度	厚度	重量
DJK6576	96	153	27	20
	128	188	27	20
	192	247	27	20
DJK2665	160	200	33	15
	320	360	33	15



DJK2665-160-BK



DJK2665-320-BK



DJK83335-320-BK



DJK83335-192-BK



DJK83335-128-BK



DJK83335-45-BK



Material/材料: Zinc Coating  
Color/颜色: ■ BK ■ BSNBEP

Model No	尺寸	长度	厚度	重量
DJK83335		45	37	18
	128	194	37	18
	192	254	37	18
	320	380	37	18
	512	580	37	18



DJK83335-45-BSNBEP

DJK83335-128-BSNBEP DJK83335-192-BSNBEP DJK83335-320-BSNBEP



DJK6570-192-DABH 304#



DJK6570-128-DABH 304#



DJK6570-DABH 304#



DJK6570-96-DABH 304#

Material/Material: Zinc Coating/镀锌  
Color/颜色: □CP ■DABH ■DBAC

Model No	尺寸	长度	宽度	厚度
DJK6570		42	23	20
	96	100	23	20
	128	138	23	20
	192	202	23	20
DJK6581	96	110	25	21
	128	148	25	21
	192	212	25	21



DJK6581-96-DBAC 304#



DJK6581-128-DBAC 304#



DJK6581-192-DBAC 304#



DJK1665-160-ON



DJK1665-ON



DJK1665-128-ON



DJK1665-96-ON

Material/Material: Zinc Coating  
Color/颜色: ■ON ■PBN

Model No	尺寸	长度	宽度	厚度
DJK1665	160	175	22	24
	128	143	22	24
	96	101	22	24
		32	22	24



DJK1665-PBN



DJK1665-96-PBN



DJK1665-128-PBN



DJK1665-160-PBN





DJK3295-AEB-128



DJK3295-S-AEB



DJK3295-AEB-96



DJK3295-L-AEB

Material/Material: Zinc Alloy  
Color/Color: ■ GP ■ AEB □ PT

Model No.	W	H	L	T
DJK3295	128	156	23	31
	96	120	20	26
DJK3295-L	65	20	20	
DJK3295-S	35	26	35	
DJK6983	49	18	30	



DJK46983-GP



DJK3295-S-GP



DJK3295-GP-128



DJK3295-GP-96



DJK3295-L-GP

Material/Material: Zinc Alloy  
Color/Color: □ CP □ AE ■ AC

Model No.	W	H	L	T
DJK5583	160	230	30	27
DJK5583-1	128	180	24	27
DJK7172-1	30	25	30	
DJK5582	230	30		
DJK5582-1	160	33		
DJK7151-1	30	25	30	
DJK7171	30	21	30	
DJK5101	128	193	34	
DJK5101	96	145	27	



DJK5101-128-AC 仿古



DJK5101-96-AC 仿古



DJK7171-30-AC 仿古



DJK5583-1-128-AC 仿古



DJK5583-160-AC 仿古



DJK7172-1-AC 仿古



DJK7151-1-AC 仿古



DJK5582-1-AC 仿古



DJK5582-AC 仿古

Material/材料: Zinc/锌合金

Color/颜色: ■AE ■ABH

Model No	长	宽	厚	重
DJK0034	90	152	28	18
DJK7068		150	18	22
DJK80128	90	108	25	15
DJK11521		32	29	32
DJK83536		66	12	36



DJK8034-96-AB



DJK7068M-AB



DJK81521-ABH



DJK80128-ABH



DJK83536-667B-AE



DJK5582-AE



DJK5582-1-AE



DJK7151-1-AE

Material/材料: Zinc/锌合金

Color/颜色: ■ABH ■AE

Model No	长	宽	厚	重
DJK6743-2	78	126	15	46
DJK5572-1		166	24	
DJK5572		225	30	
DJK5583	160	230	30	27
DJK5583-1	128	180	24	27
DJK2018		180	28	32
DJK7172-1		30	25	30
DJK2049		31	26	31



DJK6743-2-AE-78



DJK5572-1-AE



DJK5572-AE



DJK5583-1-128-AE



DJK5583-160-AE



DJK7172-1-AE



DJK2018-ABH



DJK82049-ABH



DJK1158-118-AB



DJK1404S-AB

Material/材料: Zinc alloy  
Color/颜色: ■ CP ■ GP ■ AC ■ AB

Model No	尺寸	长	宽	厚
DJK1158	118	122	22	26
DJK1158	168	173	23	26
DJK1404L		37	21	27
DJK1404S		23	20	25



DJK1158-118-GP



DJK1404S-GP



DJK1158-168-GP



DJK1404L-GP



DJK1158-168-AB



DJK1404L-AB



DJK1158-168-CP



DJK1404L-CP



DJK1158-168-AC



DJK1404L-AC



DJK6693-L-DAG

Material/材料: Zinc alloy  
Color/颜色: ■ VAS ■ AC

Model No	尺寸	长	宽	厚
DJK6693	S	158	26	
	L	188	26	
DJK1172	S	30	20	30
	L	45	24	45
	96	125	26	30
DJK3722		37	30	26
DJK3725	128	152	31	12
DJK3723		43	35	43
DJK3716	128	151	29	28



DJK6693-S-DAG



DJK1172-L-VAS



DJK1172-96-VAS



DJK1172-S-VAS



DJK3723-AC-红古铜黑



DJK3716-128-AC-红古铜黑



DJK3725-128-AC-红古铜黑



DJK3722-AC-红古铜黑



DJK6166-128-CPA 拉丝银



DJK6615-CPA 玫瑰金



DJK6166-128-GPA 玫瑰金



DJK6615-GPA 玫瑰金



DJK6166-128-GP 金色



DJK6166-128-AE 青古铜



DJK6626-128-GPA/CPA 玫瑰金/银



DJK6626-128-CPA/GPA 银/玫瑰金

Material/材料: Zrco合金  
Color/颜色: ■CP ■AE ■GPA

Model No	长 L	宽 W	高 H	厚 T
DJK6615	36	27	30	
DJK6166	128	140	31	26
DJK6626	128	144	35	17

Material/材料: Zrco合金  
Color/颜色: ■CP ■GPA

Model No	长 L	宽 W	高 H	厚 T
DJK6619	128	140	28	29
DJK6622	128	151	28	25
DJK6621	32	72	24	32
DJK6626	105	145	30	28
DJK6625	64	84	28	28



DJK6619-128-GPA 玫瑰金



DJK6619-128-CPA 拉丝银



DJK6622-128-GPA 玫瑰金



DJK6622-128-ACB 青古铜



DJK6626-105-CPA/GPA 银/玫瑰金



DJK6626-105-GPA/CPA 玫瑰金/银



DJK6621-32-GPA 玫瑰金



DJK6621-32-ACB 青古铜



DJK6625-64-CPA/GPA 银/玫瑰金



DJK6625-64-GPA/CPA 玫瑰金/银



DJK6741-128-AE 古铜花



DJK6741-2-64-AE 古铜花



DJK6741-96-AE 古铜花



DJK6741-3-AE 古铜花



DJK6741-128-MN 仿古玛瑙红

Material/材质: Zinc/合金  
Color/颜色: □ CP ■ AE ■ MN

Model No	尺寸	mm	mm	mm	mm
DJK6741	58	29	26		
	64	29	37		
	96	29	26		
	128	29	26		



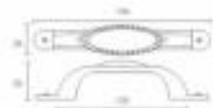
DJK6741-96-MN 仿古玛瑙红



DJK6741-3-MN 仿古玛瑙红



DJK6741-2-64-MN 仿古玛瑙红



DJK6741-128-CR 仿古铜纹



DJK6741-2-64-CR 仿古铜纹



DJK6741-96-CR 仿古铜纹



DJK6741-3-CR 仿古铜纹



DJK6741-128-CP 光银白玉

Material/材质: Zinc/合金  
Color/颜色: □ CPA ■ CP ■ AE

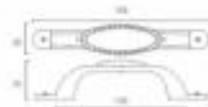
Model No	尺寸	mm	mm	mm	mm
DJK6741	58	29	26		
	64	29	37		
	96	29	26		
	128	29	26		



DJK6741-96-CP 光银白玉



DJK6741-3-CP 光银白玉





DJK6720-96-AEB 欧式



DJK6720-128-AEB 欧式



DJK6720-96-AC 欧式



DJK6720-128-AC 欧式



DJK6720-96-BAC 威尼斯



DJK6720-128-BAC 威尼斯



DJK7167-30-AEB 欧式

Material/材料: Zinc/合金  
Color/颜色: □ CP □ AE ■ AEB

Model No	长 L	宽 W	高 H	厚 T
DJK7167-1	30	25	30	
DJK6720-128	128	162	25	25
DJK6720-96	96	130	24	22



DJK7167-30-AC 欧式



DJK7167-30-BAC 威尼斯



DJK5543B-AEB-96 欧式



DJK5543B-AEB-128 欧式



DJK5543A-96 欧式



DJK5543A-128 欧式



DJK5543B-AEB 欧式

Material/材料: Zinc/合金  
Color/颜色: ■ AEB

Model No	长 L	宽 W	高 H	厚 T
DJK5543A	30	30	27	
	96	134	30	22
	128	178	29	30



DJK5543A 欧式

Material/材料: Zinc/合金  
Color/颜色: ■ AC □ AB ■ AE

Model No	长 L	宽 W	高 H	厚 T
DJK6707		34	21	30
	96	126	27	15
	128	163	26	20



DJK6707-128-AC

DJK6707-96-AC



DJK6707-AC



DJK8815A-96



DJK8802A



DJK8841A



DJK8843A



DJK7133A



DJK7130A



DJK7793A-1-30



DJK7793A-96



DJK7129A



DJK8816A-1



DJK8816A-2

Material/Material: Zinc alloy  
Color/Color: □CP □AE ■PT

Model No	尺寸	高度	长度	重量
DJK8802A		57		33
DJK8843A		70		30
DJK8815A-1		158		31
DJK8815A-2		122		31
DJK8815A	96	124		53
DJK7793		36	25	36
DJK7793-1		30	23	30
DJK7133A			68	20
DJK7130A			24	31.5

Material/Material: Zinc alloy  
Color/Color: ■PT ■AE

Model No	尺寸	高度	长度	重量
DJK7780A		44		37
DJK8868A	96	131		33
DJK5542A-1	120	100		31
DJK5542A	100	100		31



DJK8868A-96



DJK5542A-1-120



DJK5542A-100



DJK7780A



DJK7883A-96



DJK7839A-96

Material/Material: Zinc alloy  
Color/Color: □CP □AE ■PT

Model No	尺寸	高度	长度	重量
DJK7883A	96	122	30	16
DJK7839A	96	115	32	14

Material/Material: Zinc alloy  
Color/Color: □CP □AE ■PT

Model No	尺寸	高度	长度	重量
DJK8679A-1	64	90	25	13
DJK8679A	96	132	30	15



DJK8679A-1-64



DJK8679A-96



DJK3072-126-VAS



DJK3072-53-VAS



DJK3072-96-VAS



DJK7157-1-VAS

Material/材料: Zinc alloy  
Color/颜色: ■ VAS 338

Model No	尺寸	mm	mm	mm
DJK7793-2	25	25	25	
DJK7793-3	18	17	18	
DJK3072	96	134	25	25
	126	160	24	27
		53	24	25
DJK5583	78	91	25	23
DJK7793	30	23	30	
	36	25	36	
DJK7157-1	57	15	57	



DJK5596-78-VAS (对)



DJK7793-3D-VAS



DJK7793-2-26-VAS



DJK7793-36-VAS



DJK7793-3-18-VAS



DJK5583-160-VAS



DJK7172-1-VAS



DJK5583-1-126-VAS

Material/材料: Zinc alloy  
Color/颜色: ■ VAS 338

Model No	尺寸	mm	mm	mm
DJK5583	160	200	30	27
DJK5583-1	126	160	24	27
DJK7172-1	30	25	30	



DJK7798-VAS



DJK6771-96-VAS (对)



DJK6773-64-VAS

Material/材料: Zinc alloy  
Color/颜色: ■ VAS 338

Model No	尺寸	mm	mm	mm
DJK7798	31	25	31	
DJK6773	64	135	22	33
DJK6771	96	150	32	50





DJK6800-35-AEB 黄铜色



DJK6800-95-AEB 黄铜色



DJK6800-64-AEB 黄铜色



DJK6800-64-GP 金色

Material/材质: Zinc合金  
Color/颜色: ■ GP ■ AEB

Model No	尺寸	高	厚	重
DJK6800		35	20	26
DJK6800	64	160	21	27
DJK6800	95	170	31	30



DJK6800-35-GP 金色



DJK6800-95-GP 金色



DJK6716-128-DAS 黑银轴



DJK7155-1-DAS 黑银轴



DJK6716-96-DAS 黑银轴

Material/材质: Zinc合金  
Color/颜色: ■ AC ■ DAS

Model No	尺寸	高	厚	重
DJK7155-1		30	20	30
DJK6716	96	160	24	28
	128	192	24	28
DJK7160-1		30	24	30



DJK6716-128-AC 仿古



DJK6716-96-AC 仿古



DJK7160-1-AC 仿古

Material/材质: Zinc合金  
Color/颜色: □ GP ■ AB ■ AEB

Model No	尺寸	高	厚	重
DJK6217	128	163	20	20
DJK3355		32	25	30



DJK3355-AB



DJK6217-128-AB



DJK1621-160-VAS



DJK1621-95-VAS



DJK1621-VAS



DJK1621-AED



DJK1621-160-AED



DJK1621-95-AED

Material/材料: 锌合金

Color/颜色: ■ VAS ■ DASH ■ AED

Model No	尺寸	重量	长度	宽
DJK1621	160	176	23	34
	95	110	23	21
		37	21	31



DJK82182-DASH



DJK82182-8NMDL



DJK82181-76-DASH



DJK82181-76-8NMDL



DJK3291-126-AEB



DJK3291-95-AEB



DJK3291-AEB

Material/材料: 锌合金

Color/颜色: ■ DASH ■ 8NMDL

Model No	尺寸	重量	长度	宽
DJK82181	76	140	24	35
DJK82182		31	29	30
DJK3291	126	162	30	31
DJK3291	95	122	28	27
DJK3291		45	26	27

Material/材质: Zinc/合金  
Color/颜色: □ CP ■ AEB □ PT

Model No	尺寸	长度	高度	厚度
DJK3275	64	134	22	32
	96	174	25	41
DJK3275A		45	22	40
DJK3275B		61	23	33
	32	80	24	42



DJK3275-96-AEB



DJK3275-64-AEB



DJK3275A-AEB



DJK3275B-AEB



DJK3275B-32-AEB

Material/材质: Zinc/合金  
Color/颜色: □ CP ■ AEB □ PT

Model No	尺寸	长度	高度	厚度
DJK3273	64	130	22	31
	96	172	25	39



DJK3273-96-AEB



DJK3273-64-AEB



DJK26799-96-AE



DJK26798-96-AE



DJK31482-96-ABH



DJK31482-96-ACH



DJK3353-96-AC

Material/材质: Zinc/合金  
Color/颜色: ■ AC ■ ABH

Model No	尺寸	长度	高度	厚度
DJK26799	96	120	20	24.5
DJK6999		25	20	25
DJK26798	96	125	25	20
DJK6798		45	25	20

Material/材质: Zinc/合金  
Color/颜色: □ CP ■ AE ■ ACH

Model No	尺寸	长度	高度	厚度
DJK31482	96	134	20	25
DJK85417		35	28	35
DJK3353		35	22	27
	64	77	25	19
	96	115	30	22



DJK46999-L-AE



DJK46798-AE



DJK85417-ABH



DJK85417-ACH



DJK3353-64-AC



DJK3353-AC



DJK6555-128-GPB 全加锁



DJK6555-96-GPB 全加锁

Material/材料: Zinc/锌合金  
Color/颜色: □CP□AE■DBAC

Model No	尺寸	长度	高度	厚度
DJK6555	96	138	15	23
	128	178	18	25



DJK6555-128-DABH 美古



DJK6555-96-DABH 美古



DJK6555-128-DBAC 红古



DJK6555-96-DBAC 红古



DJK6558-96-GPB 全加锁



DJK6558-128-GPB 全加锁

Material/材料: Zinc/锌合金  
Color/颜色: □CP□AE■GP

Model No	尺寸	长度	高度	厚度
DJK6559	96	152	28	27
	128	194	28	27



DJK6559-128-GPB 全加锁



DJK6559-96-GPB 全加锁



DJK6559-128-DABH 青古



DJK6559-96-DABH 青古



DJK6559-128-DBAC 红古



DJK6559-96-DBAC 红古

Material/材料: Zinc/锌合金  
Color/颜色: □CP□AE■GPB

Model No	尺寸	长度	高度	厚度
DJK6558	96	141	26	22
	128	177	30	24



DJK6558-96-DBAC 红古



DJK6558-128-DBAC 红古



DJK2385-128-AE 古铜



DJK7181-1-AE 古黄



DJK6746-L-AE 古黄



DJK3261-128-AEB



DJK3261-96-AEB



DJK3261-S-AEB



DJK3261-L-AEB



DJK3249-AEB



DJK7149-AE 古黄

Material/材料: Zinc/锌  
Color/颜色:  CP  AEB  DCBHN

Model No	L	W	H	T
DJK2385		25	29	35
DJK2385	128	147	30	18
DJK6746	96	102	17	22
DJK7181		30	24	30
DJK7149		76	18	22

Material/材料: Zinc/锌  
Color/颜色:  CP  AEB  DCBHN

Model No	L	W	H	T
DJK3261		34	20	25
		60	20	21
		96	127	29
		128	154	31



DJK3249-AEB



DJK3247-64-AEB



DJK3212-S-AEB



DJK3212-64-AEB



DJK3247-AEB

Material/材料: Zinc/锌  
Color/颜色:  AEB  DCBHN

Model No	L	W	H	T
DJK3247		29	14	34
DJK3247	64	130	15	43
DJK3249		170	20	167



DJK3212-L-AEB

Material/材料: Zinc/锌  
Color/颜色:  AEB  DCBHN

Model No	L	W	H	T
DJK3212-S		30		57
DJK3212-L		30		97
DJK3212	64	97	15	42



DJK2872-AE



DJK2373-AE



DJK2373-1-AE



DJK2374-AE



DJK6915-AE



DJK2374-1-AE



DJK6915-S-AE



DJK6915-L-AE

Material/材质: Zinc/锌  
Color/颜色: C/CP/AE/CB/SH

Model No	L	W	H	T
DJK2872	178	27	25	
DJK2373	137	27	37	
DJK2373-1		25	31	
DJK2374	74	30	30	
DJK6915		27	22	
DJK2315S	110	26		
DJK6915L	190	26		
DJK2374-1	30	25	30	



DJK8866D-96



DJK8818D



DJK46883-AE

Material/材质: Zinc/锌  
Color/颜色: C/CP/AE/S

Model No	L	W	H	T
DJK3207		35	14	43
	64	64	17	31
	96	127	17	36
DJK8843D		70		30
DJK6618D		73		20
DJK8866D	96	115		52
DJK2345	96	121	27	23
DJK2374	96	121	26	13



DJK8843D



DJK3207-AEB



DJK2374-96-AE



DJK3207-64-AEB



DJK2345-96-AEB



DJK3207-96-AEB



DJK370-96-AB



DJK370-96-AC



DJK2396-AE-128



DJK2396-AE-96



DJK3355-AE



DJK3241-128-AEB



DJK3241-96-AEB



DJK3241-L-AEB

Material/材质: Zinc Alloy  
Color/颜色: ■ AC ■ AD ■ AE

Model No.	尺寸	重量	长度	宽度
DJK370	96	123	24	15
DJK2396	96	132	26	21
	128	163	27	24
DJK3355		32	25	32
DJK3241		30	22	30
	96	104	24	42
	128	137	26	14

Material/材质: Zinc Alloy  
Color/颜色: □ CP ■ AEB

Model No.	尺寸	重量	长度	宽度
DJK3242	32	72	25	31
	64	101	23	34
	128	141	29	29



DJK3242-128-AEB



DJK3242-64-AEB



DJK3242-32-AEB



DJK650517-DAS



DJK650517-AB

Material/材质: Zinc Alloy  
Color/颜色: ■ AE ■ AI ■ DAS

Model No.	尺寸	重量	长度	宽度
DJK650517	16	91	46	25
DJK7760D		44		37
DJK7108D		44		37
DJK668D	96	131		33
DJK542D-1	128	196		31



DJK668D-96-AE with 1



DJK5542D-1-128-AE with 1



DJK7760D-AE with 1



DJK2476-160-AC



DJK2476-AC



DJK2476-160-LAS



DJK2476-LAS



DJK2450-128-AB

Material/材质: Zinc/锌  
Color/颜色: ■ AP ■ AF ■ AS

Model No	尺寸	mm	mm	mm
DJK2450	160	170	22	14
DJK2450	64	90	23	14
	95	128	26	19
	128	158	26	23
DJK1347	33	15	33	



DJK2450-96-AB



DJK1347-AB



DJK2450-64-AB



DJK1347-AC



DJK2383-96-AC



DJK2383-64-AC



DJK2383-64-AB



DJK2383-96-AB



DJK2952-128-AB



DJK2952-96-AB



DJK2260-L-ACH



DJK324-AB



DJK2260-L-ABH

Material/材质: Zinc/锌  
Color/颜色: □ CP ■ AC ■ AB

Model No	尺寸	mm	mm	mm
DJK204	34	24	34	
DJK283	64	110	27	27
	90	149	27	27

Material/材质: Zinc/锌  
Color/颜色: □ CP ■ AB □ DC □ HG

Model No	尺寸	mm	mm	mm
DJK260	30	24	30	
DJK262	95	141	26	17
	128	181	26	20





DJK6748-128-AEB 咖啡铜



DJK6748-128-VAS 古银亮金漆



DJK6748-96-AEB 咖啡铜



DJK6748-96-VAS 古银亮金漆

Material/材料: Zinc/锌合金

Color/颜色: □ OP □ AE ■ AEB

Model No	长	宽	厚	重
DJK6748	96	130	21	19
DJK6748	128	186	22	21
DJK7215		35	22	35
DJK7199		85	27	24
DJK5590-1		136	26	27
DJK5590		166	34	27

Material/材料: Zinc/锌合金

Color/颜色: ■ VAS 古银

Model No	长	宽	厚	重
DJK6748	96	130	21	19
DJK6748	128	186	22	21
DJK7125		35	22	35
DJK5590		166	34	27
DJK5590-1		136	26	27
DJK7199		85	27	24



DJK7215-35-AEB 咖啡铜



DJK7199-AEB 咖啡铜



DJK5590-1-AEB 咖啡铜



DJK5590-AEB 咖啡铜



DJK5590-VAS 古银亮金漆



DJK5590-1-VAS 古银亮金漆



DJK7199-VAS 古银亮金漆



DJK7215-35-VAS 古银亮金漆



DJK80975-GP-象牙白金



DJK80977-128-GP-象牙白金



DJK80977-96-GP-象牙白金



DJK80976-GP-象牙白金



DJK81094-128-GP-象牙白金



DJK81094-96-GP-象牙白金



DJK81093-GP-象牙白金



DJK76067-96-WG



DJK76067-128-WG



DJK76067-S-WG

Material/材料: Zinc/合金  
Color/颜色: □CP ■GP

Model No	长 L	高 H	宽 W	厚 T
DJK80975	33	26	33	
DJK80976	48	18		
DJK80977	96	108	30	14
	128	145	31	15

Material/材料: Zinc Ceramic/合金  
Color/颜色: □CP ■AL ■GP ■LAS

Model No	长 L	高 H	宽 W	厚 T
DJK81093	31	25	31	
DJK81094	96	108	27	15
	128	140	27	15
DJK76067-S				
DJK76067	96			
DJK76067	128			



DJK86015-128-GP-象牙白金



DJK86015-GP-象牙白金



DJK86015-96-GP-象牙白金



DJK81959-96-GP-象牙白金



DJK81959-128-GP-象牙白金



DJK80959-GP-象牙白金



DJK83054-L-GP-象牙白金



DJK82054-L-GP-象牙白金



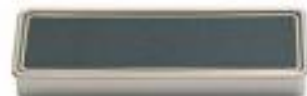
DJK82054-S-GP-象牙白金



DJK2182-160-PBN/P02



DJK2182-40-BSNM/P03



DJK2182-96-PBN/P02



DJK2182-96-BSMM/P03



DJK2182-40-PBN/P02



DJK2182-160-BSNM/P03



DJK2182-160-PRG

Material/材质: Zinc Coating/镀锌  
Color/颜色: ■ PRG ■ PBN ■ BSMM

Model No.	尺寸	W	H	W	H
DJK2182	8	41	13	41.5	
DJK2182	64	107	13	41.5	
DJK2182	96	112.5	13	41.5	
DJK2182	160	177	13	41.5	



DJK2182-96-PRG



DJK2182-64-PRG



DJK2182-40-PRG

尺寸图 DJK2182-96



DJK2182-160-PBN



DJK2182-160-BSNM



DJK2182-96-PBN



DJK2182-64-PBN



DJK2182-64-BSMM



DJK2182-96-BSNM



DJK2182-40-BSNM



DJK28119-160-SIM 哑光黑



DJK9026-176-SIM 哑光黑



DJK28119-160-GP 哑光红



DJK9026-176-GP 哑光红



DJK9125-192-GP 哑光黄



DJK9125-192-SIM 哑光黑



DJK3087-192-BK 哑光黑



DJK3087-52-BK 哑光黑



DJK8927-128-BSN

开孔尺寸 DJK8927



DJK8928-128-P8N

开孔尺寸 DJK8928



DJK8926-128-DBAC

开孔尺寸 DJK8922



DJK8928-128-SPAL



DJK9022-165-SIM 哑光黑

开孔尺寸 DJK4855



DJK4855-192-GP 哑光黄



DJK4855-192-SIM 哑光黑



DJK4855-192-BK 哑光黑



开孔尺寸 DJK8089



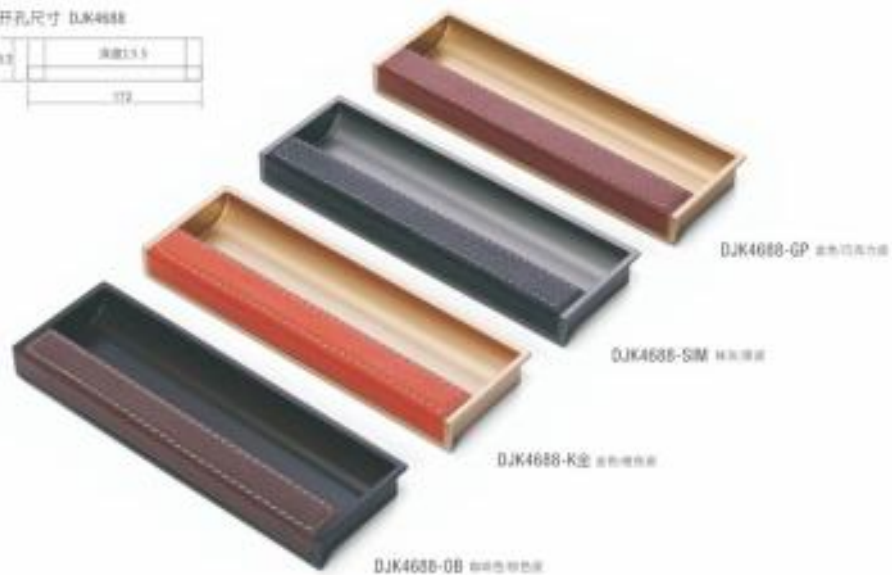
DJK8089-SIM 磁扣

DJK8089-OB 磁扣

DJK8089-GP 磁扣



开孔尺寸 DJK4688



DJK4688-GP 磁扣

DJK4688-SIM 磁扣

DJK4688-K全 磁扣

DJK4688-OB 磁扣

# BUCKLE HAND

扣手系列



底座



扣米拉手



开孔73x16

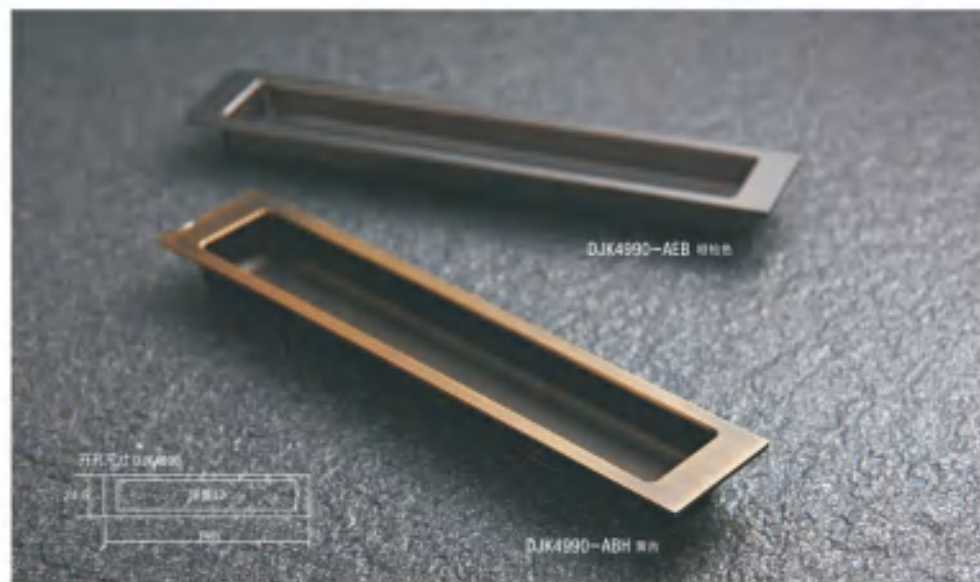


Material/材料: Zinc合金  
Color/颜色: ■BSN

DJK92365-85-BSN扣米拉手

Model No	开孔	长	宽	厚
DJK92365	85	100	37	22
DJK9632	93	102	36	18

# HOMES



DJK4990-AEB ■■■

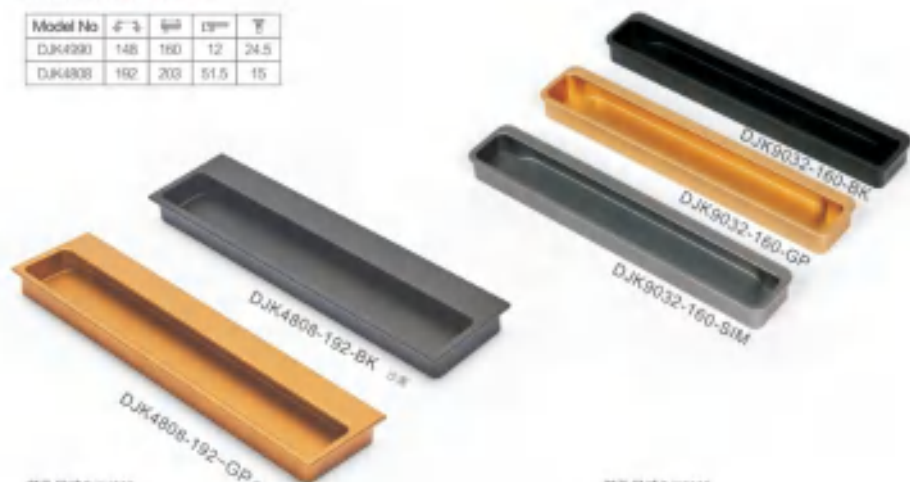
DJK4990-ABH ■■■

开孔尺寸 49x90mm



Material/材料: Zinc Chromate合金  
Color/颜色: ■OP ■AEB

Model No	开孔	长	宽	厚
DJK4990	148	160	12	24.5
DJK4808	192	203	51.5	15



DJK9032-160-BK

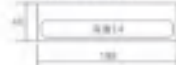
DJK9032-160-GP

DJK9032-160-SIM

DJK4808-192-BK

DJK4808-192-GP ■■■

开孔尺寸 DJK4808



开孔尺寸 DJK9032

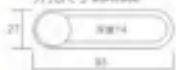


DJK9802-102-BK



DJK9802-102-BSN

开孔尺寸 DJK9802





DJA6043B-192



DJA6316-160-PS 沙銀  
DJA6316-160-CP 光飾



DJK2769-160-PS



DJA6404-160 雪白珠銀



DJZ8135-160



DJK1763-AEB

DJK1181-86-AEB

Material/材料: 鋅合金  
Color/顏色: ■PS銀白珠銀

Model No.	寸法	單位	容積	重
DJA6043B	160 166×4	15×2	60	
	192 200×4	15×2	60	

Material/材料: 鋅合金  
Color/顏色: ■PS沙銀 ■CP光飾

Model No.	寸法	單位	容積	重
DJA6316	160 172	18	45	

Material/材料: 鋅合金  
Color/顏色: ■PS沙銀

Model No.	寸法	單位	容積	重
DJK2769	160 171	19	48	

Material/材料: 鋅合金  
Color/顏色: ■PS雪白珠銀

Model No.	寸法	單位	容積	重
DJA6404	160 174	13	55	
	192 206	13	55	

Material/材料: 鋅合金  
Color/顏色: ■CP沙銀

Model No.	寸法	單位	容積	重
DJZ8135	160 200	25	14	

Material/材料: 鋅合金  
Color/顏色: ■AEB

Model No.	寸法	單位	容積	重
DJK1181	86 105	13	30	
DJK1763	16 90	12	60	



DJKR233-64-BK



DJKR233-64-DBAC



DJKR233-64-BMMDL

Material/材料: 鋅合金  
Color/顏色: ■ACS

Model No.	寸法	單位	容積	重
DJK246L	64 64	16	37	
DJK257	64 69	27	36	
DJK262	64 103	25	27	
DJK273	64 105	20	33	
DJK2981	76 64	30	39	
DJK299	64 134.5	26	22	
DJK263	86 128	36	18	



DJK2362-AEB



DJKR2981-76-DBAC



DJK2369-64-BK



DJK246L-AEB



DJK2463-96-AE



DJK2357L-64-AE

Material/材料: Zinc/锌合金  
 Color/颜色: ■ BSN ■ BK

Model No.	尺寸	重量	长度	厚度
DJK5188	64	75	11	35
DJK2231	S	65	15	28
DJK2231	L	85	15	28
DJK045		55	20	17
DJK2251		41	8	41
DJK255	S	50	8	19
DJK325	64	89	52	4
DJK801H	128	142	13	44



DJK255-S-BSN



DJK325-64-HE



DJK2231-S-BSN  
 118.5x12.5x24



DJK2231-L-BSN  
 138.5x12.5x24



DJK2251-BSN



DJK5188-64-BK



DJK5188-64-DB



DJK5188-64-YB 哑光



DJK5045-BSN



DJK5045-AB



DJK8115-128-BK



DJK8738-96-AC



DJK1132L-128-BSN  
 DJK1132M-96-BK 哑光



DJK8115-128-BK



DJK801H-96-CP 光面雪白  
 DJK801H-128-CP 光面雪白  
 DJK801H-160-SC 雪白



DJK80448-128 光面雪白



DJK8738-96-AB



DJK1258-96-AB 往下按压拉手



DJK1258-96-CP 往下按压拉手

Material/材料: Zinc/锌合金  
 Color/颜色: ■ ABZB ■ CPZB ■ AEB

Model No.	尺寸	重量	长度	厚度
DJK1258	96	122	17	39
DJK1132L	128	140	12.5	41.3
DJK8738	96	134	13	27
DJK80448	96	118	15	42
	128	190	15	42
	160	192	15	42
DJK8115	128	139	9	29



## BUCKLE HAND

鐵扣拉手系列



Material/材料: Zinc/鋅  
Color/顏色: ■ BK

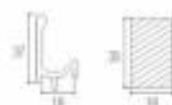
Model No.	尺寸	單位	數量	單位
DJK9038	200	200	55	18.8
	300	300	55	18.8
	1100	1100	55	18.8

DJK9038-300-SM ■ ■ DJK9038-300-GP ■ ■ DJK9038-300-BK ■ ■

可拆長度安裝



DJK9038-1100-GP ■ ■ DJK9038-1100-SM ■ ■



尺寸 (mm)



DJK6045A-180-BK ■ ■

Material/材料: Zinc/鋅  
Color/顏色: ■ BK

Model No.	尺寸	單位	數量	單位
DJK6045	100	100	37	18
	1004	1100	37	18



DJK6045A-1100-BK ■ ■



DJK90286-128-GP



DJK90286-160-BK



Material/材料: Aluminum/鋁  
 Color/顏色: ■ GP ■ BK

Model No	W	H	Depth	T
DJK90286	96	120	36	20
	128	150	36	20
	160	200	36	20
	256	300	36	20
	320	400	36	20
	896	1000	36	20



DJK10351-1100-GP ■■  
 DJK10351-900-SIM ■■



DJK10351-1100-BK ■■  
 DJK10351-900-GP ■■



DJK10351-300-SIM ■■



DJK10351-300-BK ■■  
 DJK10351-300-GP ■■

Material/材料: Zinc/鋅  
 Color/顏色: ■ BK ■ GP

Model No	W	H	Depth	T
DJK10351	204	300	36	8
	880	900	36	8
	1000	1100	36	8



DJK9878-160-BSN/A 黑色



DJK9878-32-BSN/A 黑色

Material/材料: Zinc/锌  
Color/颜色: ■BSI

Model No	长	宽	厚	重
DJK9878	32	48	25	14
	160	177	35	14



DJK9878-160-BSM/B 灰色



DJK9878-32-BSM/B 灰色



DJK9878-32-BSN/D 棕色



DJK9878-160-BSM/C 红色



DJK9878-32-BSM/C 红色



DJK9878-160-BSN/D 棕色



DJK9705-128-BSN/A 黑色



DJK9705-26-BSN/A 黑色



DJK9890-30-BSN/A 黑色



DJK9705-128-BSM/B 灰色



DJK9705-26-BSM/B 灰色



DJK9890-30-BSM/B 灰色



DJK9705-128-BSM/C 红色



DJK9705-26-BSM/C 红色



DJK9890-30-BSM/C 红色



DJK9705-128-BSN/D 棕色



DJK9705-26-BSN/D 棕色



DJK9890-30-BSN/D 棕色



DJK9705-128-GP 银色



DJK9705-26-GP 银色



DJK9890-30-GP 银色

Material/材料: Zinc/锌  
Color/颜色: ■ESI

Model No	长	宽	厚	重
DJK9890		30	30	30
DJK9705	96	127	25	32
DJK9705	128	159	25	32



DJK9826-128-BSN/A



DJK9826-96-BSN/A



DJK9751-96-BSN/A



DJK9751-128-BSN/A



DJK1274-96-PSN/P02 DJK1274-96-BSNM/P03

Material/材质: Zinc/合金  
Color/颜色: ■PSN ■BSNM ■P03

Model No	W	H	Depth	Weight
DJK9826	96	100	33	12
	128	140	33	12
DJK9751	96	101	26	12
	128	134	27	12
DJK1274	96	130	25	05



DJK81812-192-CP



DJK81812-128-CP



DJK81812-192-GP



DJK81812-128-GP

Material/材质: Zinc/合金  
Color/颜色: □BSM ■PSN □ACB

Model No	W	H	Depth	Weight
DJK2225	80	30	6	57
	100	154	8	34
	128	190	6	34
DJK81812	120	171	30	22
	192	235	30	22



DJK2225-AEB



DJK2225-96-AEB



DJK2225-128-AEB



DJK9905A-128-BSN/D



DJK9905B-96-BSN/D



DJK9905A-96-BSN/D



DJK9905B-96-BSN/D



DJK9905A-BSN/D



DJK9905B-128-BSN/D



DJK7296-96-GP 玉石色



DJK7294-96-GP 玉石色



DJK7298-GP 玉石色



DJK7301-64-GP 玉石色



DJK7301-64-CP 贝壳色



DJK7298-CP 贝壳色



DJK7294-96-CP 贝壳色



DJK7296-96-CP 贝壳色

Material/MH: Zinc Ceramic 锌合金壳  
Color/颜色: ■ CP ■ AE ■ PCLAB

Model No	长 L	宽 W	厚 H	孔距 D
DJK7296	96	127	20	30
DJK7294	96	127	20	16
DJK7301	64	60	20	12.5
DJK7298		28	26	20



DJK2363-1-16 贝壳色



DJK2363-1-128 贝壳色



DJK2363-1-96 贝壳色



DJK2363-1-32 贝壳色



DJK7287-96-CP 贝壳色



DJK7287-96-GP 玉石色

Material/MH: Zinc Ceramic 锌合金壳  
Color/颜色: ■ CP ■ AE ■ PCLAB

Model No	长 L	宽 W	厚 H	孔距 D
DJK7287	96	154	22	68
DJK2363-1	16	25	22	25
	32	50	22	50
	96	140	24	12
	128	142	24	12



DJK8859-96-HMN



DJK8859-128-HMN



DJK8859-160-HMN



DJK8859-96-BS



DJK8859-128-BS



DJK8859-160-BS

Material/MPL: Zinc/White Jade  
Color/颜色: ■ ENECL

Model No	寸吋	吋	mm	mm
DJK8859	160	176	31	15
	128	144	31	15
	96	112	31	15



DJK2535-96-HMN



DJK2535-96-BS



DJK2589-96-HMN



DJK2589-96-BS



DJK8859A-HMN



DJK8859A-BS



DJK8859B-HMN



DJK8859B-BS

Material/MPL: Zinc/BS/SS  
Color/颜色: ■ ENECL

Model No	寸吋	吋	mm	mm
DJK2535	96	115	26	19
DJK8855		37	31	37
DJK2589	96	122	30	26
DJK8859A		26	30	26
DJK8859B		26	30	26



DJK8855-HMN



DJK8855-BS

JADE HANDLE  
玉石贝奥拉手系列



DJK8860-49-BS



DJK8860-96-BS



DJK8860-160-BS



DJK8860-49-HMN



DJK8860-96-HMN



DJK8860-160-HMN

Material/材料: Zinc Stone/合金玉石  
Color/颜色: ■SNECL

Model No	尺寸	重量	长度	宽度
DJK8860	49		26	49
	96	140	26	33
	160	204	26	33



DJK8789-16-BS



DJK8789-16-HMN

Material/材料: Zinc Stone/合金玉石  
Color/颜色: ■SNECL

Model No	尺寸	重量	长度	宽度
DJK8789	16	60	35	37



DJK8853-9-D浅黄同绿

DJK8853-9-A浅紫绿兰同粉红

DJK8853-9-C全黄同黄



DJK3306-1-AB 浅咖啡



DJK3305-1-AB 浅咖啡



DJK7002-35-AB 浅咖啡



DJK7001-35-AC 浅咖啡



DJK7023-40-AB 浅咖啡



DJK2700-B-CP



DJK2700-A-CP



DJK7003-M-40 浅咖啡



DJK7003-S-35 浅咖啡

Material/材料: Zinc Gemme/天然玉石  
Color/颜色: ■AB ■SNECL

Model No	尺寸	重量	长度	宽度
DJK7023		40	25	40
DJK7002		35	25	35
DJK7000		31	33	31
DJK7003-M		40	28	40
DJK7003-S		35	28	35
DJK8853-9		47	36	47
DJK3305		42	25	42
DJK3306		42	25	42



DJK7001-RD 红色贝壳



DJK7001-OR 橙色贝壳



DJK7001-BLK 蓝色贝壳

Material/材质: Zinc Ceramic/合金陶瓷  
Color/颜色: ■ CP ■ AE ■ GPA

Model No.	直径	高度	重量	备注
DJK2954	30	30	30	
DJK2957	32	28	32	
DJK2948	40	32	40	
DJK2949	40	32	40	
DJK2986	35	32	35	
DJK2952	58	32	58	
DJK2953	45	38	45	
DJK2951	44	27	40	
DJK7045	40	26	40	
DJK7001	40	27	40	



DJK7045-RD 红色贝壳



DJK7045-GL 绿色贝壳



DJK7045-WT 白色贝壳



DJK2957-CP 透明贝壳



DJK2954-GPA 金色贝壳



DJK2948-GPA 金色贝壳



DJK2949-CP 透明贝壳



DJK2952-CP 透明贝壳



DJK2953-CP 透明贝壳



DJK2951-GP 金色贝壳



DJK2956-DAS 黑色贝壳

Material/材质: Zinc Ceramic/合金陶瓷  
Color/颜色: ■ CP ■ AB

Model No.	直径	高度	重量	备注
DJK2075	42	25	42	
DJK7061	32	28	32	
DJK7062	40	28	40	
DJK2375	61	25	35	
DJK7012	40	26	40	
DJK7006	40	26	40	



DJK7012-W-CP 白色贝壳



DJK7006-W-CP 白色贝壳



DJK7061-WT-1-AB



DJK7062-AE-WT 白色贝壳



DJK2375-C-AB



DJK7061-AE-WT 白色贝壳



DJK2375-WGF-AB



DJK2375-WGF-AB



DJK7061-WT-2-AB



DJK2376-C-AB





DJK7010-BS



DJK7030-HS



DJK7040-HS

Material/材质: Zinc Ceramic/锌  
Color/颜色: ■ CP ■ ABCDPLAS

Model No.	尺寸	高	内径	外径
DJK5148		90	38	
DJK5149		90	38	
DJK5167		90	38	
DJK5168		100	38	
DJK2819		70	38	
DJK7010		43	37	43
DJK7040		43	37	43
DJK7030		43	37	43
DJK2818		70	51	70



DJK72818-70-CP



DJK2819-70



DJK5148-90-AB



DJK5166-100-AC



DJK5167-90-AB



DJK5149-90-AB



DJK8015-128-CP



DJK8015-1-CP



DJK8015-96-CP



DJK8015-A-32-CP-6



DJK8010-64-CP



DJK8015-32-CP

Material/材质: Zinc/锌  
Color/颜色: □CP ■ CP18

Model No.	尺寸	高	内径	外径
DJK8015-1		17	29	17
DJK8010		32	47	25
DJK8015A		32	48	25
DJK8015		96	110	27
DJK8010		128	142	27
DJK8010		64	110	31
DJK4600		40	36	40

注: 以上均为凸柄



DJK8208-96-CP

Material/材质: Zinc/锌  
Color/颜色: □CP ■ CP18 □CP28

Model No.	尺寸	高	内径	外径
DJK4680		96	121	27
DJK4690		64	86	27
DJK4680-4		27	27	27

注: 以上均为凹型凸柄



DJK4680-4



DJK4600-CP



DJK46880-96



DJK46880-64



DJK3012-CP



DJK3016-CP



DJK6855-CP 黄铜底



DJK2230-34-CP



DJK5120-280-CP



DJK6021-25-CP



DJK6021-30-CP



DJK6021-40-CP



DJK1501-CP



DJK1503-CP



DJK1502-CP

Material/材质: Zinc alloy

Color/颜色: ■CP18

Model No.	寸吋	mm	mm	mm
DJK2230	34	33	34	
DJK1501	60	22	25	
DJK1502	71	22	22	
DJK1503	92	22	24	
DJK6855	37	31	37	
DJK6021	25	25	20	
	30	30	30	
	40	40	40	
DJK3012	21	19	21	
DJK3016	26	26	26	
DJK5120	26	27	28	



DJK10A25-CP



DJK10A25-GP



DJK3030-4-CP 桃紅



DJK3030-2-CP 湖藍



DJK3030-CP



DJK3030-GP



DJK3040-CP



DJK3040-GP



DJK2202-30-CP



DJK2202-30-GP



DJK2000-CP



DJK2000-GP

Material/材质: Zinc alloy

Color/颜色: □CP18 ■CP18 ■CP18

Model No.	寸吋	mm	mm	mm
DJK2202	30	40	30	
DJK10A25	25	35	25	
DJK3030	30	41	30	
DJK3040	40	43	40	

Material/材质: 锌合金

Color/颜色: ■CP白色 ■CPAB

Model No	长/寸	宽/寸	高/寸	厚/寸
DJK8013A	16	25	35	25
DJK8013B	32	50	21	50
	90	100	27	15
	128	140	27	15



DJK8013A-CP-16



DJK8013B-CP-32



DJK8013A-4-CP



DJK8013A-CP-128



DJK8013A-CP-96

Material/材质: 锌合金

Color/颜色: ■CP白色 ■CPAB

Model No	长/寸	宽/寸	高/寸	厚/寸
DJK46914	40	22	20	
DJK46914	128	135	22	20

注: 以上均为平钻



DJK46914-CP



DJK46914-128-CP



DJK46914-GP



DJK46914-128-GP



DJK8014A-96-CP-A



DJK8014A-2-CP-A



DJK8014A-64-CP-A



DJK8014A-1-CP-A

Material/材质: 锌合金

Color/颜色: ■CP白色 ■CPAB

Model No	长/寸	宽/寸	高/寸	厚/寸
DJK8014A-1	16	23	16	
DJK8014A-2	27	23	16	
DJK8014A-4	27	23	27	
DJK8014A-9	16	39	23	39
DJK8014	64	99	23	16
DJK8014	96	125	23	16

注: 以上均为平钻



DJK8014A-9-CP-A



DJK8014A-4-CP-A



DJK3022-27



DJK3022-36-16



DJK3022-64



DJK3022-96

Material/材质: 锌合金

Color/颜色: □CPAB ■CPABCPAB

Model No	长/寸	宽/寸	高/寸	厚/寸
DJK3022	64	99	21	15
DJK3022	96	125	21	15
DJK3022	10	38	21	38
DJK3022		27	21	27

注: 以上均为平钻



DJK6803-160-GP



DJK6803-128-GP



DJK6803-128-CP



DJK6803-30-GP



DJK6803-160-CP



DJK6803-30-CP



DJK7705-128-GP



DJK7705-32-GP

Material/MH: Zinc合金  
Color/颜色: ■ CP ■ GP

Model No	尺寸	重量	长度	宽度
DJK6803	160	172	27	30
	128	140	27	30
		30	22	30
DJK7705	32	41	26	41
	128	159	26	22



DJK463-128-CP



DJK463-S-CP



DJK463-96-CP



DJK463-M-CP



DJK2607-CP



DJK2607-GP

Material/MH: Zinc合金  
Color/颜色: ■ CP ■ GP

Model No	尺寸	重量	长度	宽度
DJK463	96	116	24	28
	128	137	24	34
DJK463	S	31	24	31
DJK463	M	45	24	45
DJK2607	18	44	27	44



DJK7606-96/128-CP

Material/MH: Zinc合金  
Color/颜色: ■ CP ■ GP

Model No	尺寸	重量	长度	宽度
DJK7606	96/128	136	33	9
	150/160	200	33	9
	200/250	300	33	9



DJK7606-160/192-CP



DJK7606-320/352-CP



DJK1158-34-CP



DJK5500-GP 金色贴



DJK1158-34-GP



DJK5500-CP 银色贴



DJK1158-21-GP



DJK6500-21-CP 银色贴  
DJK6500-21-GP 金色贴



DJK1158-21-CP



DJK6500-23-CP 银色贴  
DJK6500-23-GP 金色贴



DJK2286-1 琥珀色



DJK2286-2 深蓝色

Material/材料: Zinc alloy  
Color/颜色: CP GP PT

Model No.	长 L	宽 W	厚 H	重 Wt
DJK1400	34	25	34	
DJK8500	29	22	23	
DJK6500	21	16	21	
DJK1158	173	21	30	
DJK2286	96	104	30	14
DJK5500	25	26	25	



DJK5108-128-GP

Material/材料: Zinc alloy  
Color/颜色: GP CP PT

Model No.	长 L	宽 W	厚 H	重 Wt
DJK5108	96	111	28	14
DJK5108	128	146	29	17
DJK1400	34	35	34	
DJK610M	32	22	28	



DJK5108-96-GP



DJK1400-GP



DJK461-M-GP



DJK5108-128-CP



DJK5108-96-CP



DJK1400-CP



DJK461-M-CP



DJK6806-128-AEB 欧洲铜镶珍珠

Material/材料: Zn/锌合金  
Color/颜色: ■ AEB ■ CP

Model No.	L	W	H	Wt
DJK6806	128	170	30	29
	96	132	30	29
		54	25	54



DJK6806-96-AEB 欧洲铜镶珍珠



DJK6806-45-AEB 欧洲铜镶珍珠



DJK6806-45-GP 真金镶珍珠



DJK6806-96-GP 真金镶珍珠



DJK6806-125-GP 真金镶珍珠



DJK6805-160-AEB 仿古镶嵌

Material/材料: Zn/锌合金  
Color/颜色: ■ AEB ■ CP

Model No.	L	W	H	Wt
DJK6805	160	210	30	52
	98	145	30	52
		36	26	36



DJK6805-35-AEB 仿古镶嵌



DJK6805-95-AEB 仿古镶嵌



DJK6805-160-CP 银色玛瑙



DJK6805-95-CP 银色玛瑙



DJK6805-35-CP 银色玛瑙



Copper Series  
纯铜拉手



DJB1103-128-AEB-铜拉手



DJB1103-96-AEB-铜拉手



DJB1102-AEB-铜拉手

Material/材质: Brass/黄铜  
Color/颜色: □CP □AE ■AEB

Model No	长	宽	厚	重
DJB1102	33	28	30	
DJB1103	96	119	30	26
DJB1103	128	151	30	26
DJB1049-S	30	29	30	
DJB1049-L	45	39	45	
DJB1042	96	116	35	14
DJB1042	160	154	35	14



DJB1049-L-AEB-铜拉手



DJB1049-S-AEB-铜拉手



DJB1042-96-AEB-铜拉手



DJB1042-160-AEB-铜拉手

Copper Series  
纯铜拉手

Material/材质: Brass/黄铜  
Color/颜色: □CP □AE ■AEB

Model No	长	宽	厚	重
DJB1100	96	151	30	26
DJB1100	33	26	33	
DJB1100-1	72	105	45	26
DJB1007	96	160	30	29
DJB1007	128	190	32	29
DJB1088	65	100	40	26
DJB1096	34	30	34	



DJB1100-96-AEB-铜拉手



DJB1100-AEB-铜拉手



DJB1100-1-AEB-铜拉手



DJB1007-128-AEB-铜拉手



DJB1007-96-AEB-铜拉手



DJB1096-AEB-铜拉手



DJB1000-1-AEB-铜拉手

Copper Series  
纯铜拉手



DJB6015-128-AEM-咖啡黑



DJB6015-96-AEM-咖啡黑



DJB6011-96-AEM-咖啡黑



DJB6011-128-AEM-咖啡黑



DJB3001-S-AEM-咖啡黑



DJB3001-M-AEM-咖啡黑



DJB3001-L-AEM-咖啡黑

Material/材质: Brass/黄铜

Color/颜色: □CPC□AE■AEM

Model No	尺寸	重量	长度	宽度
DJB6015	96	108	25	15
DJB6015	126	141	25	15
DJB6011	96	547	21	19
DJB6011	126	586	22	21
DJB3001	L	37	30	37
DJB3001	M	33	27	33
DJB3001	S	27	21	27

Copper Series  
纯铜拉手



DJB1079-M-GPA-K金



DJB1005-S-GPA-K金



DJB1005-M-GPA-K金



DJB1008-GPA-K金



DJB1011-GPA-K金



DJB1013-GPA-K金



DJB1014-GPA-K金



DJB1057-GPA-K金



DJB1006-M-GPA-K金



DJB1006-S-GPA-K金



DJB1085-M-GPA-K金

Material/材质: Brass/黄铜

Color/颜色: □CPC□AE■GPA

Model No	尺寸	重量	长度	宽度
DJB1079	M	175	32	30
DJB1008		175	29	28
DJB1005	S	31	22	31
DJB1005	M	35	25	35
DJB1011		46	30	25
DJB1007		175	31	28
DJB1085	M	172	27	28
DJB1006	S	30	25	30
DJB1006	M	35	28	35



Copper Series  
纯铜拉手



DJB1076-64-GPA-K金



DJB1012-GPA-K金



DJB1058-GPA-K金



DJB1027-128-GPA-K金



DJB1063-57-GPA-K金

Material/材料: Brass/黄铜  
Color/颜色: □ CP □ AE ■ GPA

Model No	尺寸	mm	mm	mm
DJB1074	64	151	30	61
DJB1027	128	187	22	40
DJB1083	57	152	30	45
DJB1017	S	18	17	18
DJB1017	M	25	22	25
DJB1017	L	31	28	31
DJB1058		120	31	36



DJB1017-S-GPA-K金



DJB1017-M-GPA-K金



DJB1017-L-GPA-K金

Copper Series  
纯铜拉手

Material/材料: Brass/黄铜  
Color/颜色: □ CP □ AE ■ GPA

Model No	尺寸	mm	mm	mm
DJB1029		141	21	45
DJB1009	76	121	22	
DJB1061	S	40	5	40
DJB1077	64	117	25	36
DJB1077	96	152	25	58
DJB1082	S	31	25	31
DJB1082	M	35	30	35



DJB1082-S-GPA-K金



DJB1082-M-GPA-K金



DJB1081-S-GPA-K金



DJB1029-GPA-K金



DJB1009-76-GPA-K金



DJB1077-S-64-GPA-K金



DJB1077-L-96-GPA-K金

Copper Series  
纯铜拉手



DJB6017-128-GPA-K金



DJB6006-S-GPA-K金



DJB6017-96-GPA-K金



DJB5006-L-GPA-K金



DJB8019-L-KGP 玫瑰金贴



DJB8019-S-KGP 玫瑰金贴



DJB8019-L-KGP/WZ 玫瑰金平贴



DJB8019-S-KGP/WZ 玫瑰金平贴

Material/材料: Brass/铜  
Color/颜色: □CP□AF■GPA

Model No	长	宽	厚	重
DJB1102	33	26	30	
DJB1103	96	119	30	26
DJB1103	128	151	30	26
DJB6006	S	24.5	21	24.5
DJB6006	L	31	26	31
DJB6017	96	129	24.5	19.5
DJB6017	128	174	27.5	22
DJB8019	S	27	35	27
DJB8019	L	35	42	35



DJB1103-128-GPA-K金贴



DJB1103-96-GPA-K金贴



DJB1102-GPA-K金贴

Copper Series  
纯铜拉手



DJB6010-GPA-K金



DJB6025-GPA-128-K金



DJB6025-GPA-96-K金



DJB6015-96-GPA-K金



DJB6015-128-GPA-K金



DJB3001-M-GPA-K金



DJB3001-S-GPA-K金

Material/材料: Brass/铜  
Color/颜色: □CP□AF■GPA

Model No	长	宽	厚	重
DJB6015	96	108	25	15
DJB6015	128	141	25	15
DJB6011	96	147	21	19
DJB6011	128	196	22	21
DJB3001	M	33	27	33
DJB3001	S	27	21	27
DJB6025	96	127	26	31
	128	159	26	31
DJB6010		32	28	32



DJB6011-96-GPA-K金



DJB6011-128-GPA-K金

Copper Series  
纯铜拉手

Material/材料: Brass/铜  
Color/颜色: □ CPD AE ■ GPA

Model No	寸	寸	寸	寸
DJB1107	30	36	30	30
DJB1108	36	28	38	
DJB1141	30	29	30	
DJB1115	L	24	24	24
DJB1195	260	26	24	
DJB1109	190	28	38	
DJB1183	71	15	57	
DJB1158	35	10	35	
DJB1131	31	24	31	
DJB1167	164	30	22	



DJB1107-M-GPA-K金



DJB1183-GPA-K金



DJB1168-GPA-K金



DJB1131-GPA-K金



DJB1141-GPA-K金



DJB1167-GPA-K金



DJB1116-GPA-K金



DJB1115-L-GPA-K金



DJB1109-GPA-K金



DJB1108-GPA-K金

Copper Series  
纯铜拉手

Material/材料: Brass/铜  
Color/颜色: □ CPD AE ■ GPA

Model No	寸	寸	寸	寸
DJB1221-1		73	27	73
DJB1221-2		43.5	24	43.5
DJB1208	64	87	25	57
DJB1157-1	96	138	25	25
DJB1157	128	186	25	25
DJB1185	84	138	36	47
DJB3357-3	M	60	15	16



DJB3357-3-GPA-K金



DJB1157-1-96-GPA-K金



DJB1157-128-GPA-K金



DJB1208-64-GPA-K金



DJB1185-84-GPA-K金



DJB1221-1-GPA-K金



DJB1221-2-GPA-K金



Copper Series  
纯铜拉手

Material/材质: Brass/黄铜  
Color/颜色: ■ CP□

Model No.	尺寸	重量	长度	宽度
DJB1157-1	96	138	25	25
DJB1157	128	188	25	25
DJB1167		164	30	22
DJB1183		71	55	57



DJB3001-S-CP 美搭



DJB3001-M-CP 美搭



DJB1157-1-96-CP 美搭



DJB1157-1-128-CP 美搭



DJB1167-CP 美搭



DJB1183-CP 美搭

Copper Series  
纯铜拉手



DJB1131-CP 美搭



DJB1152-L-CP 美搭



DJB1188-CP 美搭



DJB1208-64-CP 美搭



DJB1200-CP 美搭



DJB1185-84-CP 美搭



DJB1221-1-CP 美搭

Material/材质: Brass/黄铜  
Color/颜色: ■ CP□

Model No.	尺寸	重量	长度	宽度
DJB1131		31	24	31
DJB1208	64	87	25	57
DJB1185	84	138	30	47
DJB1221-1		73	27	73
DJB1221-2		43.5	24	43.5
DJB1152	L	30	28	30
DJB1200		58	28	30
DJB1188		33.5	10	33.5



DJB1221-2-CP 美搭

Copper Series  
纯铜拉手



DJB1077-S-64-AEB-咖啡铜



DJB1077-L-96-AEB-咖啡铜

Material/材料: Brass/铜  
Color/颜色: □CP□AE■AEB

Model No	尺寸	mm	mm	mm
DJB3309	78	160	25	40
DJB1009	78	121	22	
DJB1027	128	187	22	40
DJB3339	96	132	25	30
DJB1077	96	152	25	58
DJB1077	64	117	25	36



DJB1027-128-AEB-咖啡铜



DJB3339-96-AEB-咖啡铜



DJB1009-78-AEB-咖啡铜



DJB3309-78-AEB-咖啡铜

Copper Series  
纯铜拉手



DJB1074-64-AEB-咖啡铜



DJB3313-64-AEB-咖啡铜



DJB1083-57-AEB-咖啡铜

Material/材料: Brass/铜  
Color/颜色: □CP□AE■AEB

Model No	尺寸	mm	mm	mm
DJB1074	64	151	30	61
DJB3310	78	141	25	42
DJB3313	64	135	22	33
DJB1083	57	152	30	45



DJB3310-78-AEB-咖啡铜

Copper Series  
纯铜拉手

Material/材料: Brass/纯铜  
Color/颜色: D CP □ AE ■ AEB

Model No	尺寸	长	宽	厚
DJB1009	M	178	32	30
DJB1008		175	29	28
DJB1005	S	31	22	31
DJB1005	M	35	25	35
DJB1011		46	30	25



DJB1008-AEB-纯铜柄



DJB1079-M-AEB-纯铜柄



DJB1005-S-AEB-纯铜柄



DJB1005-M-AEB-纯铜柄



DJB1011-AEB-纯铜柄



DJB1012-AEB-纯铜柄



DJB1013-AEB-纯铜柄



DJB1014-AEB-纯铜柄

Copper Series  
纯铜拉手

Material/材料: Brass/纯铜  
Color/颜色: □ CP □ AE ■ AEB

Model No	尺寸	长	宽	厚
DJB1057		175	31	28
DJB1065	M	172	27	28
DJB1006	S	30	25	30
DJB1006	M	35	28	35
DJB1058		120	31	26
DJB1082	S	31	25	31
DJB1082	M	35	30	35



DJB1006-S-AEB-纯铜柄



DJB1082-S-AEB-纯铜柄



DJB1006-M-AEB-纯铜柄



DJB1082-M-AEB-纯铜柄



DJB1056-AEB-纯铜柄



DJB1057-AEB-纯铜柄



DJB1085-M-AEB-纯铜柄

Copper Series  
纯铜拉手



DJB6006-S-AEB-抛光黄古



DJB6011B-128-AEB-抛光黄古



DJB6011B-96-AEB-抛光黄古



DJB6006-L-AEB-抛光黄古



DJB2202-30-AEB-咖啡铜

Material/材料: Copper/纯铜  
Color/颜色: □CP□AE ■AEB

Model No	长 L	宽 W	高 H	厚 T
DJB6011	96	147	21	19
DJB6011	128	186	22	21
DJB2202		30	27	30
DJB1001	S	40	5	40
DJB1017	S	18	17	18
DJB1017	M	25	22	25
DJB1017	L	31	23	31
DJB6006	S	24.5	21	24.5
DJB1017	L	31	26	31
DJB1141		30	29	30



DJB1141-AEB-咖啡铜



DJB1001-S-AEB-咖啡铜



DJB1017-S-AEB-咖啡铜



DJB1017-M-AEB-咖啡铜

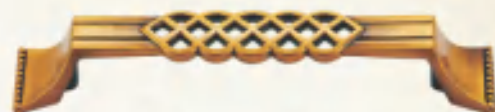


DJB1017-L-AEB-咖啡铜

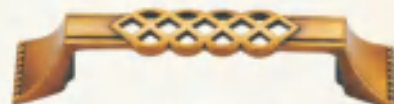
Copper Series  
纯铜拉手

Material/材料: Brass/黄铜  
Color/颜色: □CP□AE ■AEB

Model No	长 L	宽 W	高 H	厚 T
DJB3308	96	130	24	22
DJB3308	128	162	26	25
DJB3308-30		34	25	34
DJB3357-2		70	18	19
DJB3357	M	155	20	30
DJB3325A	128	196		31
	96	134		31
DJB3325B	96	131		33
DJB2222		39		37



DJB3325A-128-AEB-咖啡铜



DJB3325A-96-AEB-咖啡铜



DJB3325B-96-AEB-咖啡铜



DJB3357-M-AEB-咖啡铜



DJB3357-2-AEB-咖啡铜



DJB2222-AEB-咖啡铜



DJB3308-128-AEB-古铜

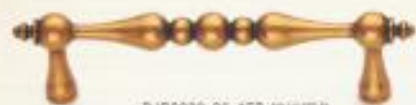


DJB3308-30-AEB-古铜



DJB3308-96-AEB-古铜

Copper Series  
纯铜拉手



DJB3320-96-AEB-欧洲铜色



DJB3320-128-AEB-欧洲铜色



DJB7278-1-96-AEB



DJB7277-AEB



DJB3383-C-MPOV



DJB3383-96-MPOV



DJB3383-128-MPOV

Material/材料: Brass/铜  
Color/颜色: □CP□AE ■GFB

Model No	寸	寸	寸	寸
DJB3320	128	160		15
DJB3320	96	120		11
DJB2217		30		30
DJB7279	96	121	31	16
DJB7277		34	30	16
DJB3383		51	35	15
	96	129	32	14
	128	160	32	14
	200	260	32	14



DJB2217-30-AEB-欧洲铜色

Copper Series  
纯铜拉手

Material/材料: Brass/铜  
Color/颜色: □CP□AE ■GFB

Model No	寸	寸	寸	寸
DJB6010	96	138	25	10
	128	141	25	10
DJB6011	96	147	21	10
	128	136	22	21
DJB6006	5	24.5	21	24.5
DJB6000	L	31	20	31



DJB6011-96-GFB-象牙白/真金



DJB6011-128-GFB-象牙白/真金



DJB6006-5-GFB-象牙白/真金



DJB6015-96-GFB-象牙白/真金



DJB6006-L-GFB-象牙白/真金



DJB6015-128-GFB-象牙白/真金



DJB6010-GFB-象牙白/真金



DJB6025-GFB-128-象牙白/真金



DJB6025-GFB-96-象牙白/真金



Copper Series  
纯铜拉手



DJB1157-1-96-AEB 亮铜本色

DJB1157-128-AEB 亮铜本色



DJB1183-AEB 亮铜本色



DJB1167-AEB 亮铜本色



DJB1185-84-AEB 亮铜本色



DJB1199-1-AEB 亮铜本色



DJB1208-64-AEB 亮铜本色

Material/材料: Brass/铜  
Color/颜色: ■ AEB

Model No	寸	mm	mm	mm
DJB1166	84	138	36	47
DJB1208	64	87	25	27
DJB1183		71	15	57
DJB1199-1		122	29	122
DJB1167		164	30	22
DJB1157-1	96	138	25	25
DJB1157	128	188	25	32



Copper Series  
纯铜拉手

Material/材料: Brass/铜  
Color/颜色: ■ AEB

Model No	寸	mm	mm	mm
DJB1152-S		25	23	25
DJB1152-L		30	26	30
DJB1154		30	26	30
DJB1131		31	24	31



DJB1221-AEB 亮铜本色



DJB1221-1-AEB 亮铜本色



DJB1221-2-AEB 亮铜本色



DJB1152-L-AEB 亮铜本色



DJB1152-S-AEB 亮铜本色



DJB1154-AEB 亮铜本色



DJB1131-AEB 亮铜本色



DJB1168-AEB 亮铜本色



DJB1200-AEB 亮铜本色



Material/材料: Brass/铜  
Color/颜色: □ CPC □ AE ■ AEB

Model No	寸	mm	mm	mm
DJB1168		33.5	10	35
DJB1200		59	12	37
DJB1321		91	27	91
DJB1221-1		73	27	73
DJB1221-2		43.5	24	43.5

Copper Series  
纯铜拉手



DJB7280-AEB 亚历山大色



DJB7133-AEB 亚历山大色



DJB1150-76-AEB-亚历山大色



DJB7123-AEB 亚历山大色



DJB1150-128-AEB-亚历山大色



DJB1120-1-AEB-亚历山大色



DJB1120-AEB-亚历山大色

Material/材料: Brass/黄铜  
Color/颜色: □CP □AE ■ACB

Model No	长 L	宽 W	厚 H	重 W
DJB1150	128	171	13	30
DJB1150	76	119	13	30
DJB1120	307	28	30	
DJB1120-1	30	25	30	
DJB7123	39	8	39	
DJB7133	42	8	42	
DJB7280	24.5	22	24.5	

Copper Series  
纯铜拉手

Material/材料: Brass/黄铜  
Color/颜色: □CP ■AEB □LAG

Model No	长 L	宽 W	厚 H	重 W
DJB7115	20	18	20	
DJB7181	26	25	26	
DJB7165	25	20	35	
DJB7136	46	24	46	
DJB7164	19	21	19	
DJB1149	30	29	30	
DJB7245	95	132	52	
DJB7156	70		37	



DJB7164-AEB 亚历山大色



DJB7181-AEB 亚历山大色



DJB7165-1-AEB 亚历山大色



DJB7115-AEB 亚历山大色



DJB1149-AEB-亚历山大色



DJB7156-AEB 亚历山大色



DJB7245-96-AEB 亚历山大色



DJB7135-AEB 亚历山大色

Copper Series  
纯铜拉手



DJB21059-126-MPOV 铜本色



DJB21059-MPOV 铜本色



DJB21059-96-MPOV 铜本色



DJB21059-64-MPOV 铜本色

Material/材质: Brass/黄铜  
Color/颜色: ■ MPOV

Model No	长 L	宽 W	高 H	厚 T
DJB21059	60	30	14	
	64	32	14	
	96	32	14	
	126	32	14	
DJB2078	96	29	10	
	126	29	10	
	182	29	10	
DJB2037	60	37	42	23
DJB2036	60	37	42	23
DJB2029	32	27	32	
DJB2030	32	23	32	
DJB2023	32	23	32	
DJB2030	32	23	32	



DJB2038-38-MPOV 铜本色



DJB2037-36-MPOV 铜本色



DJB2033-30-MPOV



DJB2075-96-MPOV 铜本色



DJB2029-32-MPOV



DJB2032-32-MPOV



DJB2078-126-MPOV 铜本色



DJB2058-32-MPOV 铜本色



DJB2078-192-MPOV 铜本色

Copper Series  
纯铜拉手



DJB9027A-32-星空黑



DJB9027B-32-贝壳玉



DJB9027C-32-水墨画



DJB9027D-32-黑白金



DJB9028A-25-星空黑



DJB9028B-25-贝壳玉



DJB9028C-25-水墨画



DJB9028D-25-黑白金



DJB9028-25-B5-MPOV



DJB9028-25-MPOV



DJB9028-20-MPOV

Material/材质: Brass/黄铜  
Color/颜色: ■ ORB ■ MPOV

Model No	长 L	宽 W	高 H	厚 T
DJB2251	35	24	35	
DJB2252	35	24	35	
DJB2253	35	24	35	
DJB9028	28	24	28	
	25	30	25	
DJB9027	32	25	32	



DJB2253-ORB



DJB2253-MPOV



DJB2252-ORB



DJB2252-MPOV



DJB2251-ORB



DJB2251-MPOV

Copper Series  
纯铜拉手



DJB9033-128-GP/D 拉丝铜/米黄色皮



DJB9033-96-GP/D 拉丝铜/米黄色皮



DJB9033-32-GP/D 拉丝铜/米黄色皮



DJB9033-128-GP/E 拉丝铜/橘黄色皮



DJB9033-96-GP/E 拉丝铜/橘黄色皮



DJB9033-32-GP/E 拉丝铜/橘黄色皮



DJB9033-128-GP/B 拉丝铜/深灰色皮



DJB9033-96-GP/B 拉丝铜/深灰色皮

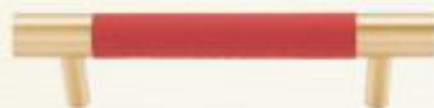


DJB9033-32-GP/B 拉丝铜/深灰色皮

Copper Series  
纯铜拉手



DJB9033-128-GP/C 拉丝铜/红色皮



DJB9033-96-GP/C 拉丝铜/红色皮



DJB9033-32-GP/C 拉丝铜/红色皮

Material/材质: Brass/纯铜  
Color/颜色: ■ GP

Model No	长	宽	厚	孔
DJB9033	32	23	32	
	96	130	30	13
	128	160	30	13





DJK2051-C



DJK2051-W

Material/MH: Ceramic/陶瓷  
Color/颜色: COP/白色

Model No.	长/mm	宽/mm	高/mm	重/g
DJK2051		38	27	38

Material/MH: Zinc Ceramic/合金陶瓷  
Color/颜色: ■CP ■AE ■CP

Model No.	长/mm	宽/mm	高/mm	重/g
DJK2029		35	26	29
DJK2042		32	20	32
DJK2012		42	26	42
DJK2003		33	20	33
DJK2005		37	31	37
DJK2006		31	26	31
DJK2009		38	30	38



DJK2051-CR-W



DJK2051-CP05



DJK2051-WG



DJK2051-LU02



DJK2051-1F



DJK2051-C14



DJK2051-W44



DJK2051-W01



DJK2051-WG04



DJK2051-W23-荷花



DJK2051-C22



DJK2051-W24-1



DJK2051-W23-1



DJK2051-W168-女孩



DJK2051-W167-男孩



DJK2035-GP-F



DJK2035-CP-F



DJK2095-S-DAS



DJK2095-L-DAS



DJK2042-W01



DJK2042-AE-W



DJK2042-AE-C



DJK2042-AE-CD



DJK2039-CP-WG



DJK2034-CPW-GC



DJK2045-CP-WGA



DJK2041-CP-WCP



DJK2012-AE-W23



DJK2012-CP-W23



DJK2012-CP-W



DJK2012-GP-W



DJK2003-1-AEC



DJK2003-AEC



DJK2003-AE-CD



DJK2003-AE-C131



DJK2228-AEC



DJK2228-C2I



DJK2228-AE-C0

Material/材料: Zinc Ceramic/合金陶瓷  
Color/颜色: ■CP ■AE □33H

Model No.	φ/mm	Height/mm	Width/mm	Depth/mm
DJK2228	36	32	38	



DJK2228-AEW



DJK2228-CR-C



DJK2228-CR-W



DJK2228-LU02



DJK2118-AE-LU02



DJK2118-C73

Material/材料: Zinc Ceramic/合金陶瓷  
Color/颜色: ■CP ■AE □33H

Model No.	φ/mm	Height/mm	Width/mm	Depth/mm
DJK2118	36	25	33	
DJK5715	36	32	33	



DJK2118-AE-CRC



DJK2118-C131



DJK5715-AE-H0



DJK5715-CP-W44



DJK2051-W44

Material/材料: Zinc Ceramic/合金陶瓷  
Color/颜色: ■AE □CP

Model No.	φ/mm	Height/mm	Width/mm	Depth/mm
DJK2501	36	34	37	20
DJK2589	36	22	28	20
DJK2603		33	25	33



DJK2118-W141



DJK2118-WGF



DJK2603-AE-C131



DJK2118-C36



DJK2118-CP-W44



DJK2501-AE-W141-96



DJK2589-WGF-96



DJK2589-C131-96



DJK2501-AE-C36-96



DJK2539-CP-W44-128



DJK2097-S-WGF



DJK2097-L-WGF



DJK2374-WGF-AE



DJK2614-1-AEW-SQG



DJK2097-S-C14



DJK2097-L-C14



DJK2374-C14-AE

Material/材质: Zinc Ceramic 锌陶瓷  
Color/颜色: ■ AE □ C14

Model No	长 L	宽 W	高 H	孔距 D
DJK2097S	25	24.5	25	
DJK2097L	30	29	30	
DJK2097A	74	30	30	
DJK2614-L	32	24	32	
DJK2614-M	25	24	25	
DJK2614-1	23	31	23	



DJK2097-S-W



DJK2097-L-W



DJK2374-W-AE



DJK2614-M-WGF



DJK2097-S-C



DJK2097-L-C



DJK2374-C-AE



DJK2614-L-WGF



DJK2097-S-C21



DJK2097-L-C21



DJK2374-C21-AE



Material/材质: Zinc Ceramic 锌陶瓷  
Color/颜色: □ C14 ■ AE □ C21

Model No	长 L	宽 W	高 H	孔距 D
DJK2697	178	21	25	
DJK2693	178	27	25	
DJK2577	152	27	35	
DJK2374	74	30	30	



DJK2697-AE-C14



DJK2697-AE-C21



DJK2693-AE-WGF



DJK2697-AE-WGF



DJK2697-AE-W



DJK2374-S-DAS



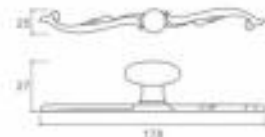
DJK2577-S-DAS



DJK2577-WGF-AE



DJK2577-C21-AE





DJK7119A-C125



DJK7119B-C119



DJK2516-AE-C131



DJK2516-AE-C0



DJK7119F-AE-LU02-96



DJK7110A-C22

Material/材质: Zinc Ceramic/合金陶瓷  
Color/颜色: □CP ■AE □D □LAS

Model No	尺寸	重量	长度	高度
DJK7119	96	107	25	15
DJK2516	96	100	25	22
DJK7110	96	107	27	19
DJK2515	96	100	35	19



DJK2515-DAS-C



DJK2516-AE-C22



DJK7110B-C16



DJK7110D-C0

Material/材质: Zinc Ceramic/合金陶瓷  
Color/颜色: □CP ■AED □LAS

Model No	尺寸	重量	长度	高度
DJK2844		20	22	20
DJK7112	96	107	27	19



DJK2844-AED-FP51



DJK7112B-AED-FP51



DJK2844-AED-W



DJK7112A-AED-W



DJK2844-AED-CRC



DJK7112C-AED-CRC

Material/材质: Zinc Ceramic/合金陶瓷  
Color/颜色: □CP ■LAS

Model No	尺寸	重量	长度	高度
DJK2843		20	22	20
DJK7111	96	107	27	19



DJK2843-LAS-3F



DJK7111E-LAS-3F



DJK2843-LAS-W



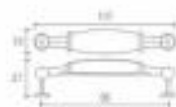
DJK7111A-LAS-W



DJK2843-LAS-CRC



DJK7111C-LAS-CRC







DJK2501-AE-C-76



DJK2501-AE-W04-96



DJK2501-AE-CD-76



DJK2501-AE-C22-96



DJK2501-GP-W01-76



DJK2501-AE-CD-96



DJK2501-LAS-CR-76



DJK2501-AE-C36-96



DJK2501-GP-W04-76

Material/材料: Zinc Ceramic/氧化锌陶瓷  
Color/颜色: ■CP ■AE ■GP

Model No	长 L	高 H	宽 W	厚 T
DJK2501	76	125	29	19



Material/材料: Zinc Ceramic/氧化锌陶瓷  
Color/颜色: □CP ■AE □GP □LAS

Model No	长 L	高 H	宽 W	厚 T
DJK2501	96	144	37	20



DJK2514-AE-W



DJK2591-AE-C262



DJK2514-AE-C



DJK2592-AE-C261



DJK2514-AE-WGF



DJK2531-CP-W250



DJK2514-AE-W23



DJK2531-AE-C14



DJK2514-AE-W131

Material/材料: Zinc Ceramic/氧化锌陶瓷  
Color/颜色: ■CP ■AE □GP □LAS

Model No	长 L	高 H	宽 W	厚 T
DJK2592	96	125	29	20
DJK2531	96	107	27	19
DJK2591	96	100	24	20
DJK2514	96	126	20	24



DJK2529-ABB-CRC-96



DJK2529-ABB-LU02-96



DJK2529-AE-CRC-96

Material/材料: Zinc Ceramic/金属陶瓷  
Color/颜色: ■ ABB ■ AE

Model No	尺寸	重量	长度	高度
DJK2529	76	39	31	36
DJK2503	76	122	31	19



DJK2282-AE-CRC



DJK2529-AE-CRC-128



DJK2503-AE-005



DJK2503-AE-W



DJK2503-AE-CD



DJK2503-AE-WGF



DJK2501-AE-LU02-96



DJK2116-AE-LU02-16



DJK2228-LU02



DJK7110F-AE-LU02-96



DJK2502-AE-LU02-76

Material/材料: Zinc Ceramic  
Color/颜色: ■ CP ■ AE

Model No	尺寸	重量	长度	高度
DJK2502	76	127	31	17.5
DJK7110	96	107	27	32
DJK2817		32	27	32
DJK2501	96	144	37	29
DJK7118	16	57	25	33
DJK2228		38	32	38
DJK2051		36	27	38
DJK2529	96	122	37	19
DJK2529	128	154	37	19



DJK2817-LU02



DJK2051-AE-LU02



DJK2529-AE-LU02-96



DJK2529-AE-LU02-128

Material: Zinc Ceramic  
Color: ■ BCU 半珠金

Model No	长	宽	厚	孔距
DJK2501	96	144	37	20
DJK2589	96	122	28	20
DJK2118	16	57	25	33
DJK2110E	96	107	27	19
DJK2228		38	32	38
DJK2546	128	137	38	22
DJK2546		58	27	23
DJK2842		38	22	35



DJK7110-BCN-LU03-96



DJK2228-BCN-LU03

Material: Zinc  
Color: ■ BCU 半珠金

Model No	长	宽	厚	孔距
DJK7110	96	107	27	19
DJK2520	96	128	37	19
DJK2520	128	154	39	19
DJK2530	128	140	30	20



DJK2529-BCN-LU03-128

Material: Zinc  
Color: ■ BCU 半珠金

Model No	长	宽	厚	孔距
DJK2501	96	144	37	20
DJK2279	128	177	28	32
DJK2589	96	122	28	20
DJK2118	16	57	25	33
DJK2228		38	32	38



DJK2529-BCN-LU03-96



DJK2501-ABM-GR-96



DJK2118-ABM-GR



DJK2589-ABM-GR-96



DJK2589-BCN-LU03-96



DJK2539-BCN-LU03-128



DJK2228-ABM-GR



DJK7110E-ABM-GR-96



DJK2118-BCN-LU03



DJK2501-BCN-LU03-96



DJK2546-ABM-GR-128



DJK2842-ABM-GR



DJK2546-ABM-GR



DJK2279-BCN-LU03-128

CERAMIC  
陶瓷拉手系列

Material/材质: Zinc Ceramic/合金陶瓷  
Color/颜色: □ AE ■ RB

Model No.	尺寸	重量	长度	宽度
DJK2529	96	122	37	19
DJK2529	126	154	39	19
DJK2226		38	37	38
DJK2501	96	144	37	20
DJK2589	126	122	26	20



DJK2529-RB-WF-128



DJK2226-RB-WF



DJK2529-RB-WF-96



DJK2501-RB-WF-96

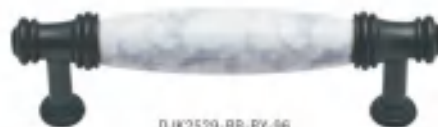


DJK2589-RB-WF-96



Material/材质: Zinc合金  
Color/颜色: □ CP ■ RB

Model No.	尺寸	重量	长度	宽度
DJK2529	96	122	37	19
DJK2118	16	57	25	33
DJK2228		38	32	38
DJK2589	96	122	26	20
DJK2501	96	144	37	20



DJK2529-RB-BY-96



DJK2228-RB-BY



DJK2118-RB-BY-16



DJK2589-RB-BY-96



DJK2501-RB-BY-96

CERAMIC  
陶瓷拉手系列

Material/材料: Zinc Alloy  
Color/颜色: □ CP □ AE ■ ABS

Model No	尺寸	高度	长度	厚度
DJK2609	35	26	35	
	99	26	30	
	128	26	30	



DJK2609-ABS-C



DJK2609-ABS-C-95



DJK2609-ABS-C-128



DJK2608-AE-C-95



DJK2608-AE-C-128

Material/材料: Zinc Alloy  
Color/颜色: ■ AE

Model No	尺寸	高度	长度	厚度
DJK2608-S	42	26	30	
DJK2608-L	45	26	45	
DJK2608	99	26	30	
	128	26	30	



DJK2608-L-AE-C



DJK2608-S-AE-C



DJK8859C-BCN-H-128



DJK8859C-BCN-H



DJK8859C-RB-W-128



DJK8859C-RB-W

Material/材料: Zinc Ceramic/金属陶瓷  
Color/颜色: ■ RB ■ BCN

Model No	尺寸	高度	长度	厚度
DJK8859C	28	30	28	
DJK8859B	128	144	31	15



DJK7829-128-AE/24



DJK7829-S-AE/24



DJK7829-96-AE/24



DJK7829-S-BLAE/25



DJK7829-96-BLAE/25



DJK7829-128-BLAE/25

Material/材料: Zinc Ceramic/合金陶瓷  
Color/颜色: □CP ■AE ■ORB

Model No	长 L	高 H	宽 W	厚 T
DJK7829-S	32	28	20	
DJK7829	96	112	28	17
	128	143	28	17
DJK3026	128	104	35	
DJK3026	96	132	35	
DJK3026	55	35	45	



DJK3026-128-CR-BAC



DJK3026-55-CR-BAC



DJK3026-96-CR-BAC



DJK7825-128-ORB/25



DJK7825-96-ORB/25



DJK7825-S-ORB/25

Material/材料: Zinc Ceramic/合金陶瓷  
Color/颜色: □CP ■AE ■ORB

Model No	长 L	高 H	宽 W	厚 T
DJK7825-S	34	25	22	
DJK7825	96	106	25	14
	128	138	25	14



DJK7825-96-AE/25



DJK7825-128-AE/25



DJK7825-S-AE/25



DJK7825-128-AE/24



DJK7825-S-AE/24



DJK7825-96-AE/24



DJK2051-W23



DJK2051-C22



DJK2051-CR



DJK2136A



DJK2136B



DJK2136C



DJK2136A-96



DJK2136A-128



DJK2136B-96



DJK2136B-128



DJK2136C-96



DJK2136C-128

Material/MPL: Zinc Ceramic/金属陶瓷  
Color/颜色: ■ AE ■ DAS

Model No.	尺寸	96	128	19
DJK2051	38	27	38	
DJK2136	38	32	38	

Material/MPL: Zinc Ceramic/金属陶瓷  
Color/颜色: ■ AE ■ DAS

Model No.	尺寸	96	128	19
DJK2136	18	112	40	22
	128	145	45	24



DJK2051-W23-1



DJK2507-AE-W23-1



DJK2228-AE-W23-1



DJK2051-W24-1



DJK2507-AE-G23-1



DJK2228-AE-W24-1



DJK2507-W23-96



DJK2507-W23-128



DJK2507-W24-96



DJK2507-W24-128



DJK2507-G23-96



DJK2507-G23-128

Material/MPL: Zinc Ceramic/金属陶瓷  
Color/颜色: ■ AE □ DAS

Model No.	尺寸	96	128	19
DJK2051	38	27	38	
DJK2507	32	26	32	
DJK2228	38	32	38	

Material/MPL: Zinc Ceramic/金属陶瓷  
Color/颜色: ■ AE □ DAS

Model No.	尺寸	96	128	19
DJK2507	96	113	31	16
DJK2507	128	142	31	19



DJK2518-AE-CD



DJK2518-AE-CD-76



DJK2546-AE-CB2-16



DJK2546-AE-CB2-128

Material/MH: Zinc/Ceramic  
Color/颜色: ■ AEO ■ AC1

Model No	尺寸	长度	宽度	高度
DJK2521	128	147	29	29
	96	110	23	22
	56	52	24	29
DJK81226	96	123	25	25
DJK81226	32	70	25	25
DJK2518		32	25	32
DJK2518	76	109	27	21
DJK2649		33.5	25	26



DJK2649-W133



DJK2649-C131



DJK2546-AE-C-16



DJK2546-AE-C-128



DJK81226-32-AEB



DJK81226-96-AEB



DJK2621-AED-LU02-128



DJK2621-AED-LU02-16



DJK2621-AED-LU02-96

Material/MH: Zinc/Ceramic/Ceramic  
Color/颜色: ■ AEO □ DAC ■ AC

Model No	尺寸	长度	宽度	高度
DJK2546	16	58	27	23
DJK2546	128	137	30	22
DJK2567	96	114	26	22
DJK2567	128	146	26	24.5



DJK2567-AEB-C261-96



DJK2567-AEB-C261-128

Material/MH: Zinc/Ceramic/Ceramic  
Color/颜色: ■ AC ■ AEO □ PC □ AS

Model No	尺寸	长度	宽度	高度
DJK2563	96	120	28	19



DJK2563-AE-W264-96



DJK2563-AC-C-96





DJK2641-AE-VP-128

Material/材料: Zirconite  
Color/颜色: ■ AE

Model No	尺寸	mm	mm	mm
DJK2507	32	26	32	
DJK7110	96	107	27	14
DJK2553	128	145	33	18
DJK2228	38	32	38	
DJK2118	18	57	25	33
DJK2641	96	128	21	23
DJK2641	128	160	22	26



DJK2641-AE-VP-96



DJK2118-AE-VP



DJK2228-AE-VP



DJK7110-AE-VP



DJK2507-AE-VP



DJK2553-AE-VP



DJK2573-AE-CRC-100



DJK2873-AE-C



DJK2673-CP-W195



DJK2675-AE8-GD



DJK2875-CP-W46



DJK2573-AE-CRC-96



DJK2573-AE-CRC



DJK2569-CR-96



DJK2569-LU02-CR-96

Material/材料: Zinc Ceramic/合金陶瓷  
Color/颜色: ■ CP ■ AE □ CP ■ AEB

Model No	尺寸	mm	mm	mm
DJK2569	96	115	42	34
DJK2873	32	107	38	12
DJK2875	32	107	32	10
DJK2573			45	26
	96	125	45	26
	160	180	23	26



DJK2529-BNC-96



DJK6691-BNC-128



DJK6691-BNC-160



DJK6691-BNC-96



DJK2118-BNC



DJK2228-BNC

Material/材料: Zinc alloy  
Color/颜色: ■ BNC ■ BNC+brass

Model No	长 L	宽 W	高 H	孔距 D
DJK6691	160	177	44	24
	128	145	44	24
	96	112	44	24



DJK2529-BCN-BLF-96



DJK2228-BCN-BLF



DJK2501-BCN-BLF-96



DJK2589-BCN-BLF-96



DJK2118-BCN-BLF-16

Material/材料: Zinc Ceramic 合金陶瓷  
Color/颜色: ■ DAS 古铜 ■ DAS 古银

Model No	长 L	宽 W	高 H	孔距 D
DJK2511	96	106	29	19
DJK2529	96	127	37	19
DJK7110	96	107	27	19
DJK2589	96	122	26	20
DJK2501	96	144	37	20
DJK2228		38	37	38
DJK2118	16	57	25	33



DJK7110-DAS-CR-96



DJK2511-DAS-CR-96



DJK2228-DAS-CR



DJK2118-DAS-CR-16



DJK2501-DAS-CR-96



DJK2529-DAS-CR-96



DJK2228-DAS-LU01



DJK2501-DAS-LU01-96



DJK2118-DAS-LU01



DJK7110-DAS-LU01-96



DJK2589-DAS-LU01-96

Material/材料: Zinc/锌合金

Color/颜色: ■BK ■W ■WL

Model No.	尺寸 L	尺寸 W	尺寸 H	尺寸 D
DJK2504	96	112	30	18
DJK2504	128	140	44	23
DJK2501	96	144	39	20
DJK2228		37	21	37



DJK2504-BK-WL-128 ■■■



DJK2504-BK-WL-96 ■■■



DJK2501-BK-WL-96 ■■■



DJK2501-BK-W-96



DJK2504-BK-W-128



DJK2228-BK-W



DJK2504-BK-W-96



Material/材料: Zinc Ceramic/锌陶瓷

Color/颜色: ■ABB □DAG

Model No.	尺寸 L	尺寸 W	尺寸 H	尺寸 D
DJK2536	128	141	32	19



DJK2536-ABB-WGF



DJK2536-ABB-W23



DJK3640-C315-AED-128



DJK3640-C315-AED-96



DJK3640-AED-C-128



DJK3640-AED-C-96

Material/材料: Zinc/锌合金

Color/颜色: ■AED

Model No.	尺寸 L	尺寸 W	尺寸 H	尺寸 D
DJK3640	96	130	31	16
DJK3640	128	170	32	18



DJK2595-AEB-W186-96



DJK2595-AEB-W186-128



DJK2511-AE-C264



DJK2511-AE-C6F



DJK2504-AEB-C264-96



DJK2504-AEB-W211-128



DJK2504-AEB-C264-128



DJK2504-AEB-W211-96

Material/Material: Zinc Ceramic/合金陶瓷  
Color/颜色: CP AEB

Model No	尺寸	mm	mm	mm	mm
DJK2595	96	120	25	22.5	
DJK2595	128	160	34	30	



Material/Material: Zinc Ceramic/合金陶瓷  
Color/颜色: CP AEB CB3N CP

Model No	尺寸	mm	mm	mm	mm
DJK2504	96	115	34.5	15	
	128	148	44	21	
DJK2511	96	105	29	19	



DJK2535-AE-C186-96



DJK2535-AE-C351-96



DJK2589-AEH-C361-128

Material/Material: Zinc Ceramic/合金陶瓷  
Color/颜色: CP AEB

Model No	尺寸	mm	mm	mm	mm
DJK3611	96	120	27	22	
DJK3611	128	160	30	29	
DJK2589	128	168	34	22	
	96	120	28	20	
DJK2535	96	115	26	19	



DJK2589-AEH-C361-96



DJK3611-AEB-C-96



DJK3611-AEB-C-128



DJK3611-AEB-C350-96



DJK3611-AEB-C350-128



DJK2554-CP-W04-128



DJK2554-CPW-128



DJK2554-AE-CRW-128



DJK2553-AE-CRC-128



DJK2553-DAS-CRC-128



DJK2553-AE-C-128



DJK2553-DAS-CRW-128

Material/MF: Zinc Ceramic/合金陶瓷  
Color/颜色: ■ AE ■ CP ■ DAS

Model No	寸	高	宽	厚
DJK2554	128	145	33	19
DJK2553	128	145	33	19
DJK2556	128	151	40	17
DJK2555	128	151	39	19



DJK2556-AE-CRW-128



DJK2556-AE-C-128



DJK2555-AE-CD-128



DJK2555-AE-CRW-128



DJK2555-DAS-CRW-128



DJK2526-BSN-96 沙网



DJK2526-BSN-W-128 沙网



DJK2526-CPW-96 光网



DJK1075-CP-W-96 光网



DJK1075-CP-W-128 光网



DJK2501-DAS-XW-96



DJK2097-S-W-BSN 沙网



DJK2526-CPW-128 光网



DJK2017-CP-W 光网



DJK2101-DAS-XW



DJK2051-DAS-XW

Material/MF: Zinc Ceramic/合金陶瓷  
Color/颜色: ■ CP ■ AE ■ DAS □ BP

Model No	寸	高	宽	厚
DJK2526	96	121	37	19
	128	152	37	19
DJK2526	96	106	37	19
	128	134	37	19
DJK1075	128	137	20	31
	96	108	18	23
DJK2051		38	27	36
DJK2501	96	144	37	20
DJK2101	50	43	35	



DJK2527-AE-C14-32



DJK2527-AE-C14-128

Material/材料: Zinc Oxide/氧化锌陶瓷

Color/颜色: ■ CP ■ AE

Model No.	长 L	宽 W	高 H	重 W
DJK2527	32	52	22	28
DJK2527	128	154	26	38
DJK2812		42	28	42
DJK5553		85	42	25
DJK5553	128	150	42	36



DJK2527-CP-W23-32



DJK2527-CP-W23-128



DJK2812-CP-W23



DJK2527-AE-W23-32



DJK2527-AE-W23-128



DJK2812-AE-W23



DJK5553-AE-W



DJK5553-AE-W-128



DJK5553-DAS-CRW



DJK5553-DAS-CRW-128



DJK2097-L-ON-W199



DJK2643-ON-W199-128

Material/材料: Zinc Oxide

Color/颜色: ■ ON ■ RO ■ CP

Model No.	长 L	宽 W	高 H	重 W
DJK2643	96	120	22	26
DJK2643	128	150	25	27
DJK2097L		30	29	30



DJK2643-ON-W199-96



DJK2643-W-128-CP 玫瑰金



DJK2097-L-W-CP 玫瑰金



DJK2643-W-96-CP 玫瑰金



DJK2643-RO-W-128 玫瑰金



DJK2097-L-RO-W



DJK2643-RO-W-96 玫瑰金



DJK80960-CP



DJK6032-16-CP



DJK327-BSN

Material/材料: Zinc/合金  
Color/颜色: ■CP ■BSN ■CP/BSN

Model No.	4 1/2"	5 1/2"	6 1/2"	7"
DJK327	35	22	35	
DJK6032	16	42	25	21
DJK80960		32	25	32



DJK1205-32-CP



DJK81501-CP



DJK1236-16-CP

Material/材料: Zinc/合金  
Color/颜色: ■CP ■BSN ■CP/BSN

Model No.	4 1/2"	5 1/2"	6 1/2"	7"
DJK1205	32	40	25	40
DJK81501		43	15	45
DJK1236	16	75	13	75



DJK162-16-PS



DJK2252-BSN



DJK1209-SC

Material/材料: Zinc/合金  
Color/颜色: ■SC ■PS ■CP/PS

Model No.	4 1/2"	5 1/2"	6 1/2"	7"
DJK162	16	50	10	50
DJK2252		36	5	36
DJK1209	32	53	15	53



DJK6263-SC



DJK1172-L-SC



DJK80270

Material/材料: Zinc/合金  
Color/颜色: ■SC ■PS ■CP/PS

Model No.	4 1/2"	5 1/2"	6 1/2"	7"
DJK6263			25	24
DJK1172		15	22	14
DJK80270		31		7



DJK3232-32-CP



DJK1246-SC



DJK8071-SC

Material/材料: Zinc/合金  
Color/颜色: ■CP ■PS ■CP/PS

Model No.	4 1/2"	5 1/2"	6 1/2"	7"
DJK1246	32	53	25	13
DJK3232	32	51.5	13.5	51.5
DJK8071		30	20	10

Material/材料: Zinc/合金  
Color/颜色: ■CP ■BSN ■CP/BSN

Model No.	4 1/2"	5 1/2"	6 1/2"	7"
DJK2261		65	36	32



DJK2261-CP



DJK2261-BSN



DJK2261-CP

Material/材料: Zinc/合金  
Color/颜色: ■CP ■BSN ■CP/BSN

Model No.	4 1/2"	5 1/2"	6 1/2"	7"
DJK2260		30	24	30



DJK2260-L-GP



DJK2260-L-DNL



DJK2260-L-CP

Material/材料: Zinc/合金  
Color/颜色: ■SC ■BSN ■CP/BSN

Model No.	4 1/2"	5 1/2"	6 1/2"	7"
DJK81010		35	28	35
DJK81361		31	28	31
DJK80201		30	28	36



DJK81010-35-CP



DJK81361-BSN



DJK80201-OC

Material/材料: Zinc/合金  
Color/颜色: ■SC ■BSN ■CP/BSN

Model No.	4 1/2"	5 1/2"	6 1/2"	7"
DJK6069		25	24	20



DJK6069-SC



DJK6069-BSN



DJK6069-CP

Material/材料: Zinc/合金  
Color/颜色: ■SC ■BSN ■CP/BSN

Model No.	4 1/2"	5 1/2"	6 1/2"	7"
DJK17820		25	25	25
DJK8084		25	35	25
DJK81805		12	22	12



DJK81805-S-CP



DJK6064-BSN



DJK17820-SC



DJK2021-60-CP 黑面/光镜



DJK3642-60-8K 雾黑

Material/材料: Aluminum/铝合金  
Color/颜色: ■8K雾黑

Model No	尺寸	mm	mm	mm	mm
DJK2021	32	60			60
DJK3642	16	60	20		60



DJK1223A-16-CP 茶面/光镜



DJK1223A-32-CP 茶面/光镜

Material/材料: Zinc alloy  
Color/颜色: ■CP茶面/光镜

Model No	尺寸	mm	mm	mm	mm
DJK1223A	16	56	30.5		56
	32	80	30.5		80



DJK1223B-16-SC 桃木/珠镜



DJK1223B-32-SC 桃木/珠镜

Material/材料: Zinc alloy  
Color/颜色: ■SC桃木/珠镜

Model No	尺寸	mm	mm	mm	mm
DJK1223B	16	56	30.5		56
	32	80	30.5		80



DJK1208-CP



DJK1240A-32-BSN

Material/材料: Zinc alloy  
Color/颜色: ■CP茶面 ■BSN雾黑

Model No	尺寸	mm	mm	mm	mm
DJK1240A	32	180	30		27
DJK1208	64	74	27		60



DJK2175-64-CP



DJK2892B-SC

Material/材料: Zinc alloy  
Color/颜色: ■SC茶面 ■CP茶面

Model No	尺寸	mm	mm	mm	mm
DJK2175	64	100	16.5		51
DJK2892B	32	50	15		40

Material/材料: Zinc alloy  
Color/颜色: ■SC茶面 ■CP茶面

Model No	尺寸	mm	mm	mm	mm
DJK1109		34.5	30		34.5



DJK1109-BSN



DJK1109-SC



DJK1109-CP

Material/材料: Zinc alloy  
Color/颜色: ■CP茶面 ■SC

Model No	尺寸	mm	mm	mm	mm
DJK5715	16	44	25		44
DJK8053	16	48	25		30



DJK5715-16-CP



DJK8053-BSN



DJK8053-CP

Material/材料: Zinc alloy  
Color/颜色: ■CP茶面

Model No	尺寸	mm	mm	mm	mm
DJK2818	16	40	25		40
DJK249		24	21		24
DJK279	32	51	32		38



DJK279-32-CP



DJK2818-CP



DJK249-CP

Material/材料: Zinc alloy  
Color/颜色: □SC茶面 ■BSN雾黑

Model No	尺寸	mm	mm	mm	mm
DJK2722	32	60	21		60



DJK2722-1-BSN



DJK2722-2-BSN



DJK2722-BSN

Material/材料: Zinc alloy  
Color/颜色: ■SC茶面 ■CP茶面

Model No	尺寸	mm	mm	mm	mm
DJK2157	16	53	25		53
DJK3631		55	24		45
DJK3738	16	62	27		50



DJK2157-16-BSN



DJK3631-CP



DJK3738-BSN 雾黑





DJK7712-32-SC

DJK7712-160-SC

DJK7712-96-SC

Model No	长 L	宽 W	高 H	孔距 D
DJK7712	32	42	37	16
	96	106	81	36
	160	169	56	16



DJK2996-128-CP



DJK2996-96-AE



DJK2996-96-CP



DJK2250-S-GP



DJK2250-S-CP

Material/材料: Zinc/锌合金  
Color/颜色: CP AE GP

Model No	长 L	宽 W	高 H	孔距 D
DJK2996	96	111	15	16
DJK2996	128	151	32	36
DJK2996	96	95	16	

Material/材料: Zinc/锌合金  
Color/颜色: BSN

Model No	长 L	宽 W	高 H	孔距 D
DJK8868	96	137	28	16
DJK2756		34	27	34
DJK2756	76	110	22	16



DJK8868-96-BSN



DJK2756-76-BSN



DJK2756-BSN



DJK82328-160-BSN



DJK82328-96-BSN

Material/材料: Zinc/锌合金  
Color/颜色: BSN BSN

Model No	长 L	宽 W	高 H	孔距 D
DJK82328	160	172	27	10
	96	108	27	10



DJK7166-128-BSN



DJK7166-96-BSN

Material/材料: Zinc/锌合金  
Color/颜色: BSN BSN

Model No	长 L	宽 W	高 H	孔距 D
DJK7166	96	108	23	7
	128	140	25	8



DJK6001-128-BSN



DJK6001-128-SC

Material/材料: Zinc/锌合金  
Color/颜色: SC BSN BSN

Model No	长 L	宽 W	高 H	孔距 D
DJK6001	128	140	25	15



DJK6237-160-BSN



DJK6237-160-CP



DJK6181-160-BSN



DJK3067-128-BSN



DJK3715-128-BK



DJK3715-128-CP



DJK10345-160-CP

Material/材料: Zinc alloy  
Color/颜色: ■ BSN ■ CP

Model No	尺寸	长度	高度	厚度
DJK6237	160	160	26	16

Material/材料: Zinc alloy  
Color/颜色: ■ BSN ■ CP

Model No	尺寸	长度	高度	厚度
DJK6181	160	190	30	18

Material/材料: Zinc alloy  
Color/颜色: ■ BSN

Model No	尺寸	长度	高度	厚度
DJK3067	128	145	27.5	16

Material/材料: Zinc alloy  
Color/颜色: ■ BSN ■ CP

Model No	尺寸	长度	高度	厚度
DJK3715	128	142	25	23

Material/材料: Aluminum alloy  
Color/颜色: ■ CP

Model No	尺寸	长度	高度	厚度
DJK10345	160	170	32	36
	160	202	34	36
	200	330	32	36



DJK650569-160-CP



DJK6112-160-CP



DJK6288-192-CP  
DJK6288-256-CP



DJK7095-160-CP



DJK82270-160-CP



DJK82270-128-CP

Material/材料: Zinc alloy  
Color/颜色: ■ CP

Model No	尺寸	长度	高度	厚度
DJK650569	160	195	20	25

Material/材料: Zinc alloy  
Color/颜色: ■ BSN ■ CP

Model No	尺寸	长度	高度	厚度
DJK6112	160	180	22	7

Material/材料: Zinc alloy  
Color/颜色: ■ CP

Model No	尺寸	长度	高度	厚度
DJK6288	192	207	34	9
	256	271	34	9

Material/材料: Zinc alloy  
Color/颜色: ■ CP

Model No	尺寸	长度	高度	厚度
DJK7095	160	192	42	14

Material/材料: Zinc alloy  
Color/颜色: □ CP/BSN ■ CP

Model No	尺寸	长度	高度	厚度
DJK82270	160	169	26	18.5
DJK82270	128	157	26	18.5
DJK82270		36	22	36



DJK82270-CP



DJK3077-160-CP

Material/材质: 锌合金  
Color/颜色: ■ CP

Model No	长 L	宽 W	厚 H	重 Wt
DJK3077	160	160	30	27



DJK6248-192-BSN  
DJK6248-192-SC

Material/材质: 锌合金  
Color/颜色: ■ BSN ■ SC ■ CP/BS

Model No	长 L	宽 W	厚 H	重 Wt
DJK6248	128	160	25	25
DJK6248	192	226	25	27



DJK6248-128-CP



DJK3642-160-CP  
DJK3642-128-CP

Material/材质: 锌合金  
Color/颜色: ■ CP ■ BS ■ SC/BS

Model No	长 L	宽 W	厚 H	重 Wt
DJK3642	128	162	33	24
	160	200	33	24



DJK3642-160-BSN  
DJK3642-128-BSN



DJK6217-128-CP

Material/材质: 锌合金  
Color/颜色: ■ BSN ■ CP ■ BS ■ SC/BS

Model No	长 L	宽 W	厚 H	重 Wt
DJK6217	128	153	29	20



DJK6217-128-BSN

Material/材质: 锌合金  
Color/颜色: ■ BS/BSN

Model No	长 L	宽 W	厚 H	重 Wt
DJK405	160	160	39	21



DJK405-160-BSN

Material/材质: 锌合金  
Color/颜色: □ CP ■ BS

Model No	长 L	宽 W	厚 H	重 Wt
DJK1889	160	176	31	19



DJK1889-160-BSN

Material/材质: 锌合金  
Color/颜色: ■ BS/BSN

Model No	长 L	宽 W	厚 H	重 Wt
DJK6182	160	172	28	21



DJK6182-160-BSN

Material/材质: 锌合金  
Color/颜色: □ BS ■ BSN

Model No	长 L	宽 W	厚 H	重 Wt
DJK6238	160	205	30	24



DJK6238-160-BSN

Material/材质: 锌合金  
Color/颜色: ■ CP ■ BS/BSN ■ BS

Model No	长 L	宽 W	厚 H	重 Wt
DJK2160	128	165	29	23



DJK2160-128-CP

Material/材质: 锌合金  
Color/颜色: ■ CP ■ BS

Model No	长 L	宽 W	厚 H	重 Wt
DJK3116	128	136	31	8
	224	232	31	8
	320	328	31	8



DJK3116-224-CP



DJK3116-128-CP



DJK6110-256-BK 黑色



DJK6110-256-BSNBEP 橘色



DJK6110-192-BK 黑色



DJK6110-160-BK 黑色



DJK6110-128-BSNBEP 橘色



DJK6110-96-BSNBEP 橘色

Material/MPL: Zinc/合金  
Color/颜色: ■BK ■BSNBEP

Model No	尺寸	间距	间距	厚
DJK6110	96	121	27	7
	128	158	27	7
	160	193	27	7
	192	225	27	7
	256	290	27	7
	320	356	27	7



DJK6110-96-CP 橘色



DJK6110-125-BSN 橘色



DJK6110-160-SC 黑色



DJK6110-192-BSN 橘色



DJK6110-256-BSN 橘色



DJK6110-320-CP 黑色

Material/MPL: Zinc/合金  
Color/颜色: ■CP ■BSN ■DC

Model No	尺寸	间距	间距	厚
DJK6110	96	121	27	7
	128	158	27	7
	160	193	27	7
	192	225	27	7
	256	290	27	7
	320	356	27	7





DJK1266-S-CP



DJK6222-160-CP

Material/材料: Zinc Alloy  
Color/颜色: ■CP■BSN

Model No.	W	H	CP	BSN
DJK1075	160	170	24	26
DJK1077	160	170	24	44
DJK1354	16	60	22	66
DJK1082	160	165	18	50
	182	222	20	52
DJK1355	32	75	42	14
DJK6222	160	220	36	16
DJK1266	32	60	26	60



DJK1355-32-CP



DJK1075-160-CP



DJK1077-160-CP



DJK1354-16-CP



DJK1082-160-CP



DJK1082-192-CP

Material/材料: Zinc Alloy/锌合金  
Color/颜色: □CP□BSN

Model No.	W	H	CP	BSN
DJK7263-1	70	26	46	
DJK7272	52		50	
DJK7268	61		37	
DJK7261	96	104	23	40
DJK7274	96	104	23	66



DJK7263-1-BSN www



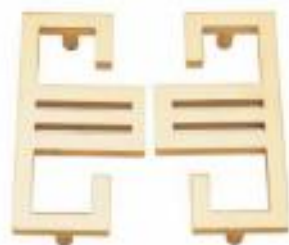
DJK7263-1-GP www



DJK7272-BSN www



DJK7272-GP www



DJK7274-1-96-GP www



DJK7268-BSN www



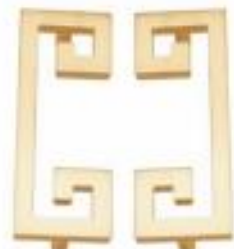
DJK7268-GP www



DJK7274-1-96-BSN www



DJK7261-1-96-BSN www



DJK7261-1-96-GP www



DJK1083A-64-CP

Material/材料: 锌合金  
Color/颜色: ■ CP1083A

Model No	尺寸	长	宽	厚
DJK1083A	32	44	24	40
	64	76	24	40
	128	140	24	40



DJK1083A-32-CP



DJK1083A-128-CP



DJK1145-12-CP



DJK1145-160-CP

Material/材料: 锌合金  
Color/颜色: ■ CP1083A

Model No	尺寸	长	宽	厚
DJK1145	12	39	20	29
	60	105	25	29
DJK1146	16	40	23	35
	60	100	25	35
DJK1154	16	48	20	48
	160	208	26	52



DJK1146-16-CP



DJK1146-160-CP



DJK1154-16-CP



DJK1154-160-CP



DJK2170C-160-白漆



DJK2274-2-CP 黑漆



DJK2170A-160-红漆



DJK2274-1-CP 红漆



DJK1151-128-CP

Material/材料: 锌合金  
Color/颜色: ■ CP1083A

Model No	尺寸	长	宽	厚
DJK1151	64	144	18	40
DJK1347	66	128	20	117
DJK1349	32	102	20	38
	48	144	21	52
DJK1151	66	130	18	23
	128	176	20	37



DJK1151-96-CP



DJK1349-1-CP



DJK1349-2-CP



DJK1347-1-CP



DJK1347-2-CP



DJK3712-64-CP



DJK12-300-224

Material/Material: Stainless steel/不锈钢  
Color/颜色: ■ SSN/F304

Model No	长/mm	宽/mm	高/mm	厚/mm
DJK12	160	220	34	12
	192	256	34	12
	224	300	34	12
	264	500	34	12
	480	600	34	12



DJK2192-14-160

Material/Material: Stainless steel/不锈钢  
Color/颜色: ■ SSN/F304

Model No	长/mm	宽/mm	高/mm	厚/mm
DJK2192	160	172	36	14
	192	202	36	14
	320	520	36	14



DJK8135-15-160

Material/Material: Stainless steel/不锈钢  
Color/颜色: ■ SSN/F304

Model No	长/mm	宽/mm	高/mm	厚/mm
DJK8135	160	176	40	15
	192	208	40	15
	320	328	40	15



DJK8127E-13-160

Material/Material: Stainless steel/不锈钢  
Color/颜色: ■ SSN/F304

Model No	长/mm	宽/mm	高/mm	厚/mm
DJK8127E	128	158	36	12
	160	190	36	12
	192	222	36	12
	320	360	36	12



DJK0757-18-192

Material/Material: Stainless steel/不锈钢  
Color/颜色: ■ SSN/F304

Model No	长/mm	宽/mm	高/mm	厚/mm
DJK0757	160	208	45	18



DJK2190-20-160

Material/Material: Stainless steel/不锈钢  
Color/颜色: ■ SSN/F304

Model No	长/mm	宽/mm	高/mm	厚/mm
DJK2190	160	172	45	20
	192	202	45	20
	320	330	45	20



DJK5005-16-160

Material/Material: Stainless steel/不锈钢  
Color/颜色: ■ SSN/F304

Model No	长/mm	宽/mm	高/mm	厚/mm
DJK5005	160	175	37	16
	192	207	37	16
	320	325	37	16



DJK10396-320

Material/Material: Stainless steel/不锈钢  
Color/颜色: ■ SSN/F304

Model No	长/mm	宽/mm	高/mm	厚/mm
DJK10396	320	314	45	15



DJK8132-14-192

Material/Material: Stainless steel/不锈钢  
Color/颜色: ■ SSN/F304

Model No	长/mm	宽/mm	高/mm	厚/mm
DJK8132	96	110	36	14
	128	142	36	14
	160	174	36	14
	192	206	36	14



DJK1102-10-192

Material/Material: Stainless steel/不锈钢  
Color/颜色: ■ SSN/F304

Model No	长/mm	宽/mm	高/mm	厚/mm
DJK1102	96	106	32	10
	128	138	32	10
	160	202	32	10
	320	330	32	10



DJK5212-16-160 按长度定制

Material/材料: Aluminum/铝合金  
Color/颜色: ■ F3 雾白

Model No	长度	高度	宽度	厚度
DJK5212	160	250	35	16
	192	232	36	16
	320	300	36	16



DJJ6202A-160 按长度定制

Material/材料: Aluminum/铝合金  
Color/颜色: ■ F3 雾白/珠光

Model No	长度	高度	宽度	厚度
DJJ6202A	160	200	34	13
	192	232	34	13
	320	360	34	13



DJJ6202C-128 按长度定制

Material/材料: Aluminum/铝合金  
Color/颜色: ■ F3 雾白/珠光

Model No	长度	高度	宽度	厚度
DJJ6202C	128	156	36	16
	192	232	36	16
	320	360	36	16



DJJ6211-16-160 按长度定制

Material/材料: Aluminum/铝合金  
Color/颜色: ■ F3 雾白/珠光

Model No	长度	高度	宽度	厚度
DJJ6211	160	175	41	18
	192	207	41	18
	320	335	41	18



DJK6027C-192

Material/材料: Aluminum/铝合金  
Color/颜色: ■ CP 珠光/雾白

Model No	长度	高度	宽度	厚度
DJK6027C	160	190	37	15
	320	350	37	15



DJJ6401-192 按长度定制

Material/材料: Aluminum/铝合金  
Color/颜色: ■ F3 雾白/珠光

Model No	长度	高度	宽度	厚度
DJJ6401	192	202	39	26
	320	330	39	26



DJJ6051-A 雾白

Material/材料: Aluminum/铝合金  
Color/颜色: ■ F3 雾白

Model No	长度	高度	宽度	厚度
DJJ6051	192	26	22	
	267	26	22	
	397	26	22	
	547	26	22	
	697	26	22	
	797	26	22	



DJJ6711-A-350 雾白

Material/材料: Aluminum/铝合金  
Color/颜色: ■ F3 雾白

Model No	长度	高度	宽度	厚度
DJJ6711	192	3	35	
	267	3	35	
	347	3	35	
	407	3	35	
	547	3	35	
	697	3	35	



DJK7021-192

Material/材料: Aluminum/铝合金  
Color/颜色: ■ F3 雾白

Model No	长度	高度	宽度	厚度
DJK7021	128	162	25.4	24.7
	192	216	25.4	24.7



DJK90266-128-GP

Material/材料: Aluminum/铝合金  
Color/颜色: ■ GP ■ BK

Model No	长度	高度	宽度	厚度
DJK90266	96	120	36	20
	128	150	36	20
	160	200	36	20
	256	300	36	20
	320	400	36	20
	696	1000	36	20



DJK90266-160-BK



DJK6044-2000-BK 珠光





## CAGE HANDLE

鳥籠拉手系列

Material/材料: 304/316

Color/顏色: ■ AE ■ DAS

Model No.	尺寸	高度	深度	寬度
DJY712	96	110	38	20
	128	142	38	20
	160	174	38	20



DJY712T-96-DAS



DJY7120-96-AE



DJY712T-160-DAS



DJY7120-160-AE

Material/材料: 304/316

Color/顏色: ■ AE ■ DAS

Model No.	尺寸	高度	深度	寬度
DJY710	96	104	38	19
	128	136	38	19
	160	168	38	19



DJY710T-128-DAS



DJY7100-96-AE



DJY7100-128-AE



DJY710T-160-DAS

Material/材料: 304/316

Color/顏色: ■ AE ■ DAS

Model No.	尺寸	高度	深度	寬度
DJY711	90	118	38	20
	128	150	38	20
	160	182	38	20



DJY711T-160-DAS



DJY711T-96-DAS



DJY7110-128-AE



DJY711T-128-DAS

## HOMES

Material/材料: 304/316

Color/顏色: ■ AE □ DAS

Model No.	尺寸	高度	深度	寬度
DJY708		35	35	35
		43	45	43
DJY706		62		35
		76		40
		100		49



DJY7080-43-AE



DJY708T-43-DAS



DJY708T-35-DAS



DJY7060-62-AE



DJY7060-76-AE



DJY7060-100-AE



DJY706T-62-DAS



DJY706T-76-DAS



DJY706T-100-DAS

Material/材料: 304/316

Color/顏色: ■ AE ■ DAS

Model No.	尺寸	高度	深度	寬度
DJY709	96	111	38	18
	128	143	40	18
DJY7124	124	58	58	33
DJY7192	192	252	66	36



DJY7090-128-AE



DJY709T-128-DAS



DJY7192-192-AE



DJY709T-96-DAS



DJY7124-DAS



DJK2016-GM-120



DJK2016-GM-33



DJK2016-GM-125



DJK2016-GM-24



DJK2016-GM-113



DJK2016-GM-111



DJK2016-GM-108A



DJK2016-GM-72



DJK2016-GM-131



DJK2016-GM-76



DJK2016-GM-77



DJK2016-GM-75



DJK1067-AC (衣钩)



DJK1045-AC (衣钩)



DJK1041-AC (衣钩)



DJK1048-AC (衣钩)



DJK1072-AC (衣钩)



DJK1085-AC (衣钩)



DJK1083-AC (衣钩)



DJK1084-D (衣钩)



DJK1085-D (衣钩)



DJK1083-D (衣钩)